



**Plans d'encombrement  
Dimensional drawings**

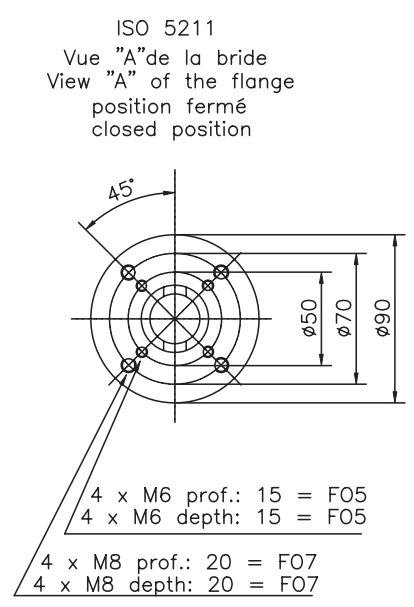
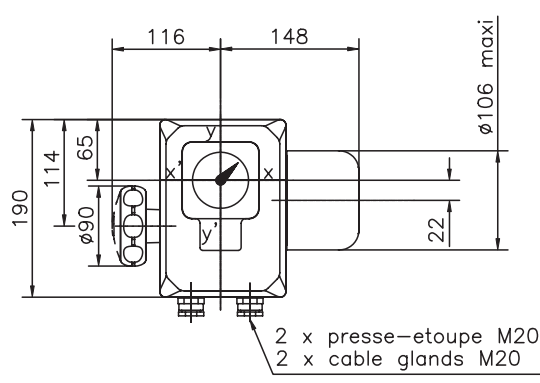
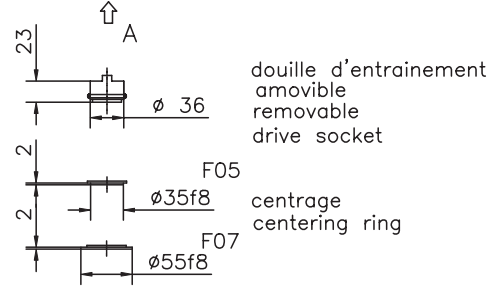
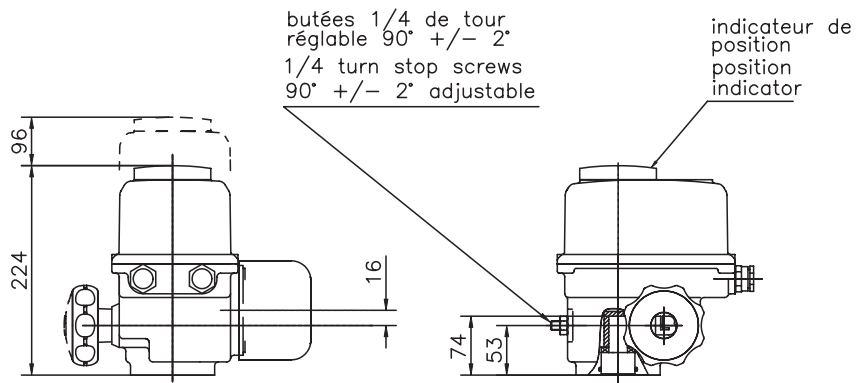
# **SD Range / Gamme SD**

**Weatherproof  
Etanche**

- OA3
- OA6 / OA8 / OAP
- OA6 / OA8 / OAP with/avec INTEGRAL+ or/ou POSIGAM+
- OA15
- OA15 with/avec INTEGRAL+ or/ou POSIGAM+
- AS18 / AS25 / ASP
- AS18 / AS25 / ASP with/avec INTEGRAL+ or/ou POSIGAM+
- AS50
- AS50 with/avec INTEGRAL+ or/ou POSIGAM+
- AS80
- AS80 with/avec INTEGRAL+ or/ou POSIGAM+
- BS50 / BS100 / BS150
- BS50 / BS100 / BS150 with/avec INTEGRAL+ or/ou POSIGAM+
- AS100 / AS200 / AS400 for/pour 3PH
- AS100 / AS200 / AS400 for/pour 3PH with/avec INTEGRAL+ or/ou POSIGAM+
- AS100 / AS200 / AS400 for/pour 1PH
- AS100 / AS200 / AS400 for/pour 1PH with/avec INTEGRAL+ or/ou POSIGAM+
- ASM0 / ASM1
- ASM0 / ASM1 with/avec INTEGRAL+ or/ou POSIGAM+
- ASM2 / ASM3
- ASM2 / ASM3 with/avec INTEGRAL+ or/ou POSIGAM+
- SRA6
- SRA6 with/avec INTEGRAL+ or/ou POSIGAM+
- SRC
- SRC with/avec INTEGRAL+ or/ou POSIGAM+

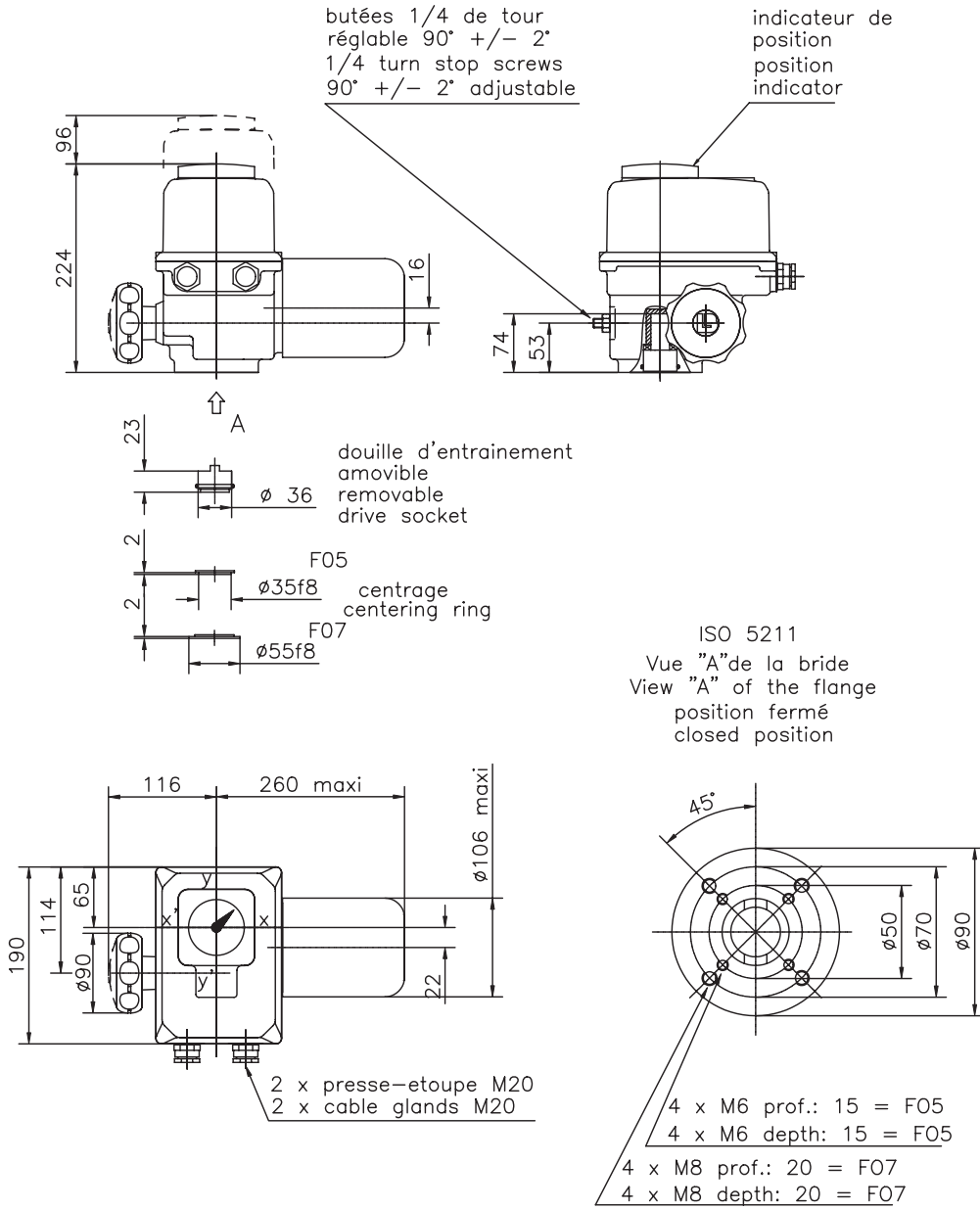
*All data in this brochure are given for information only and are subject to change without notice.*

*Les données contenues dans cette brochure sont communiquées pour information et nous nous réservons la possibilité de les modifier sans préavis.*

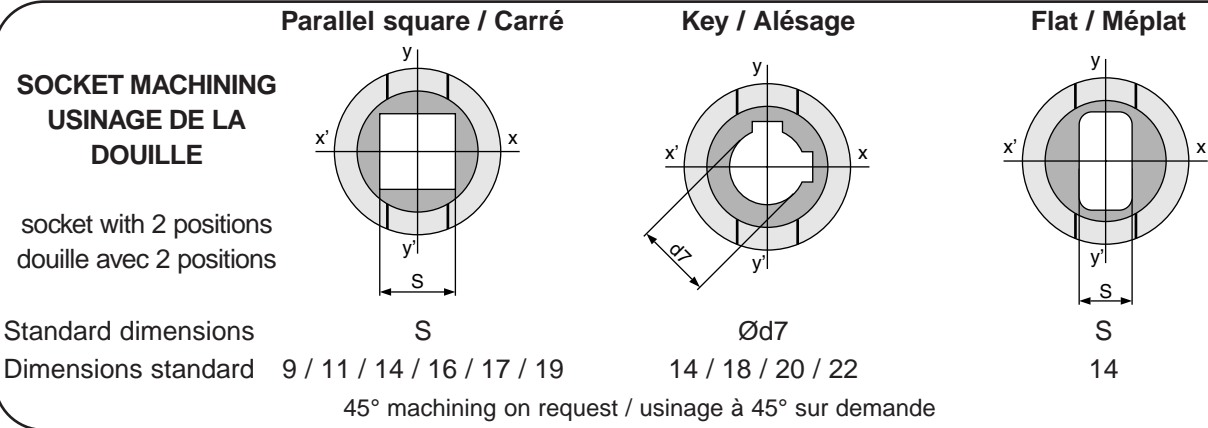


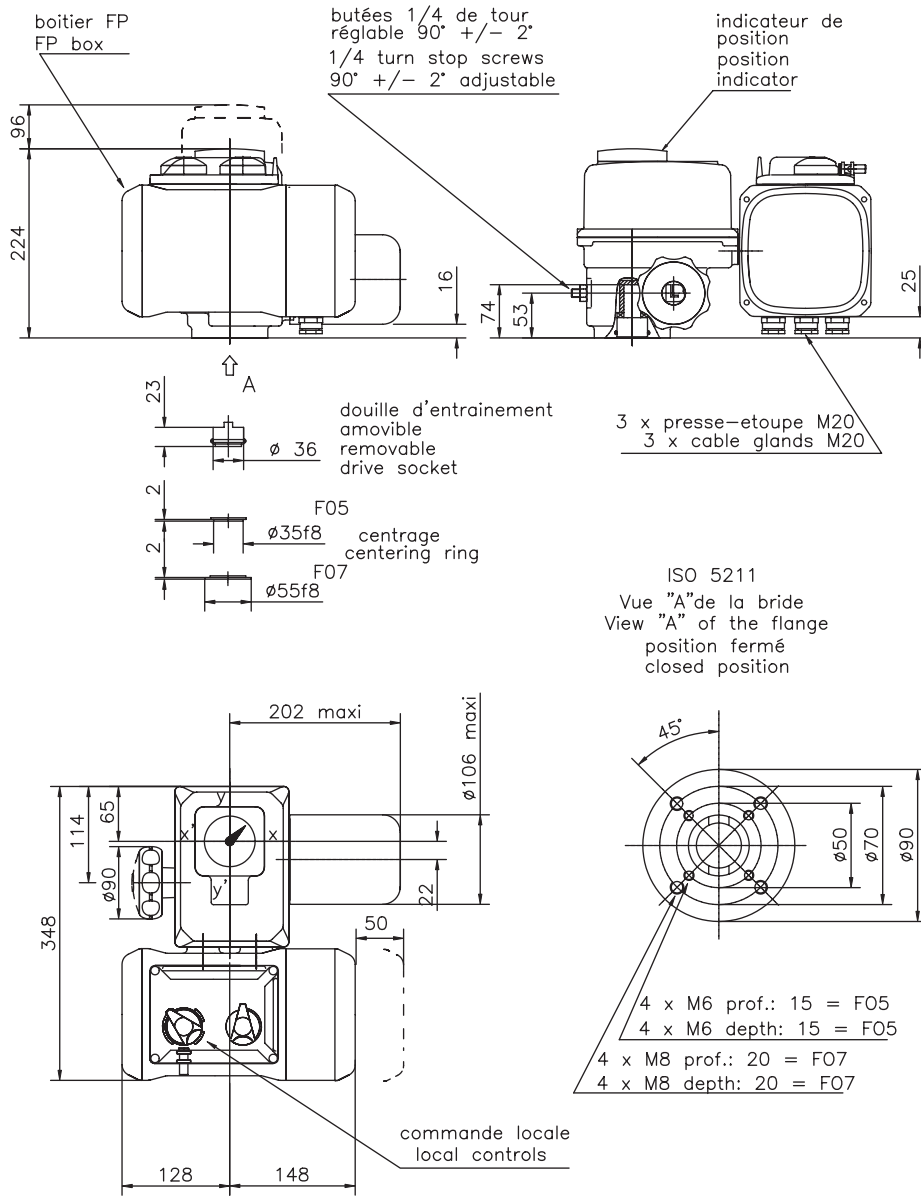
Poids: 6 kg  
Weight: 6 kg

	Parallel square / Carré	Key / Alésage	Flat / Méplat
<b>SOCKET MACHINING USINAGE DE LA DOUILLE</b>			
socket with 2 positions douille avec 2 positions			
Standard dimensions	S	Ød7	S
Dimensions standard	9 / 11 / 14 / 16 / 17 / 19	14 / 18 / 20 / 22	14
	45° machining on request / usinage à 45° sur demande		



	Kg
OA6	6
OA8	7
OAP	7





	kg
OA6	10
OA8	11
OAP	11

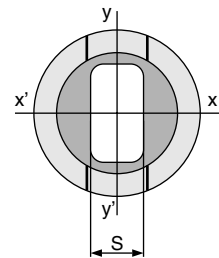
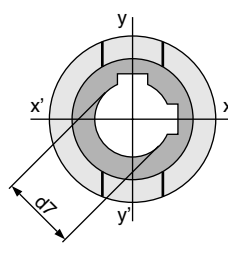
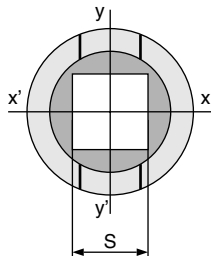
### Parallel square / Carré

### Key / Alésage

### Flat / Méplat

#### SOCKET MACHINING USINAGE DE LA DOUILLE

socket with 2 positions  
douille avec 2 positions



Standard dimensions

Dimensions standard 9 / 11 / 14 / 16 / 17 / 19

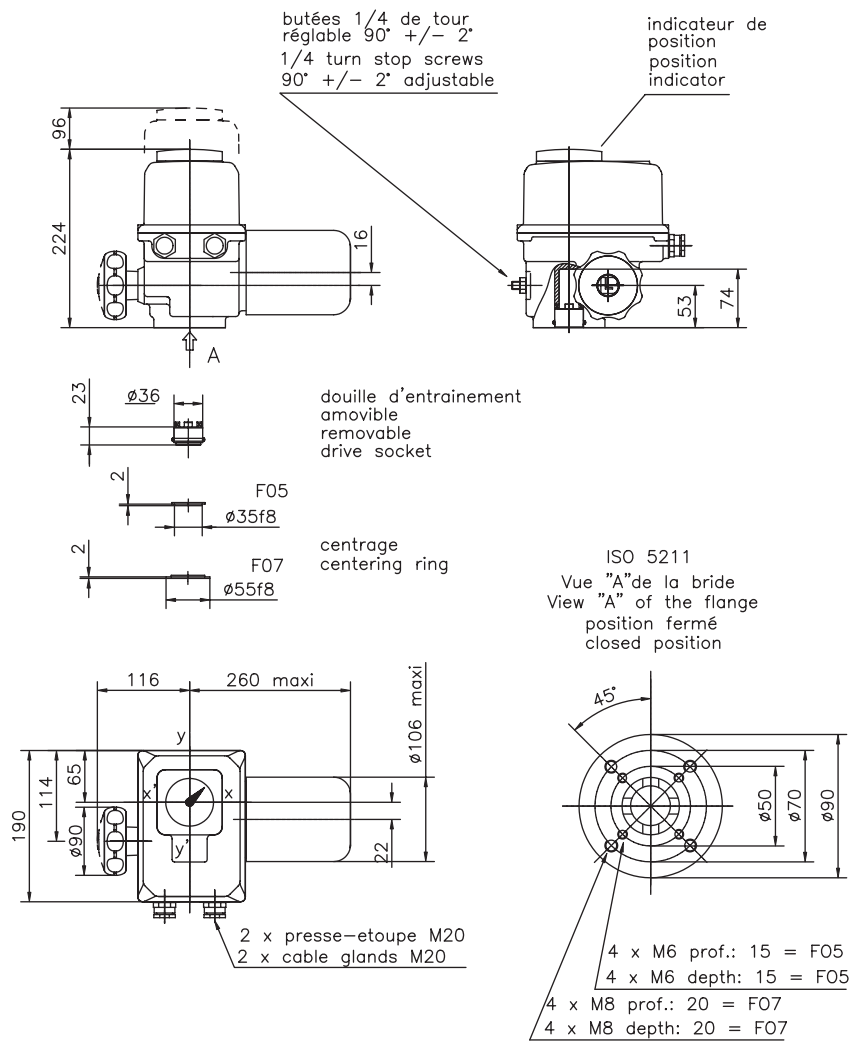
Ød7

14 / 18 / 20 / 22

S

14

45° machining on request / usinage à 45° sur demande



POIDS: 7 Kg  
WEIGHT: 7 Kg

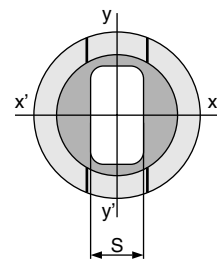
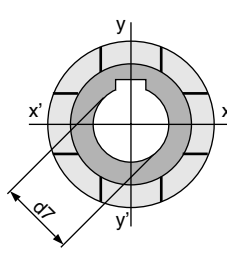
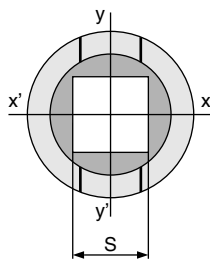
### Parallel square / Carré

### Key / Alésage

### Flat / Méplat

#### SOCKET MACHINING USINAGE DE LA DOUILLE

socket with 4 positions  
douille avec 4 positions



Standard dimensions

Dimensions standard 9 / 11 / 14 / 16 / 17 / 19

Ød7

14 / 18 / 20 / 22

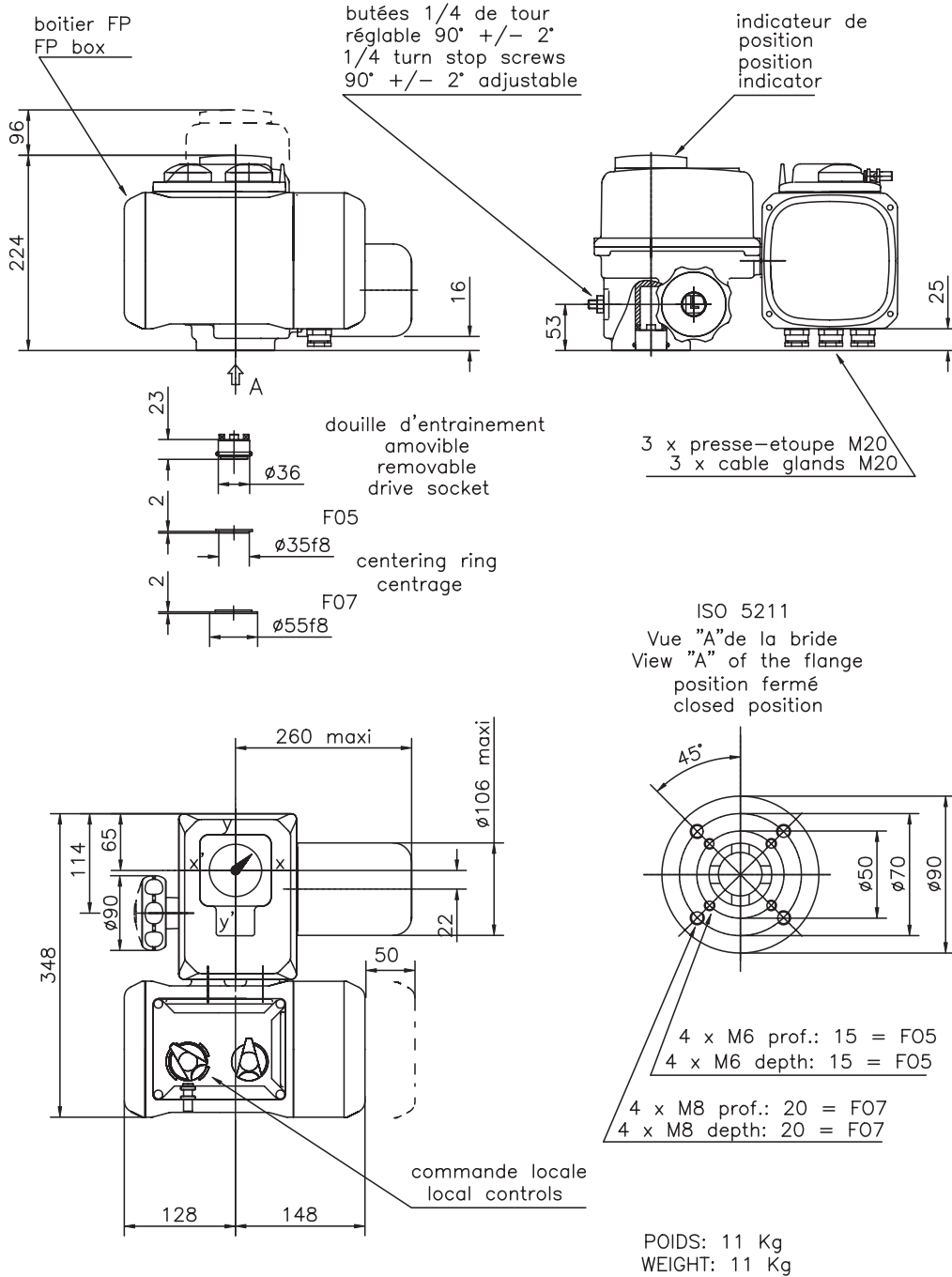
S

14 / 19

45° machining on request / usinage à 45° sur demande

4, rue d'Arsonval - 95505 GONESSE Cedex - FRANCE

Tel : 33.(0)1.34.07.71.00 - Fax : 33.(0)1.34.07.71.01 - E-mail : mail@bernard-actuators.com



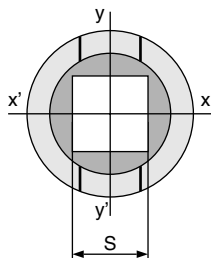
**Parallel square / Carré**

**Key / Alésage**

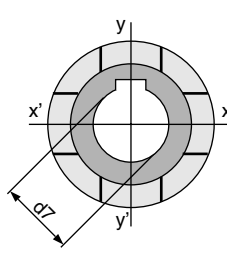
**Flat / Méplat**

**SOCKET MACHINING  
USINAGE DE LA  
DOUILLE**

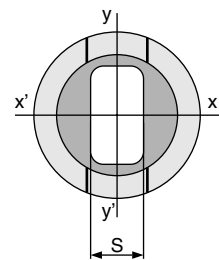
socket with 4 positions  
douille avec 4 positions



S



Ød7



S

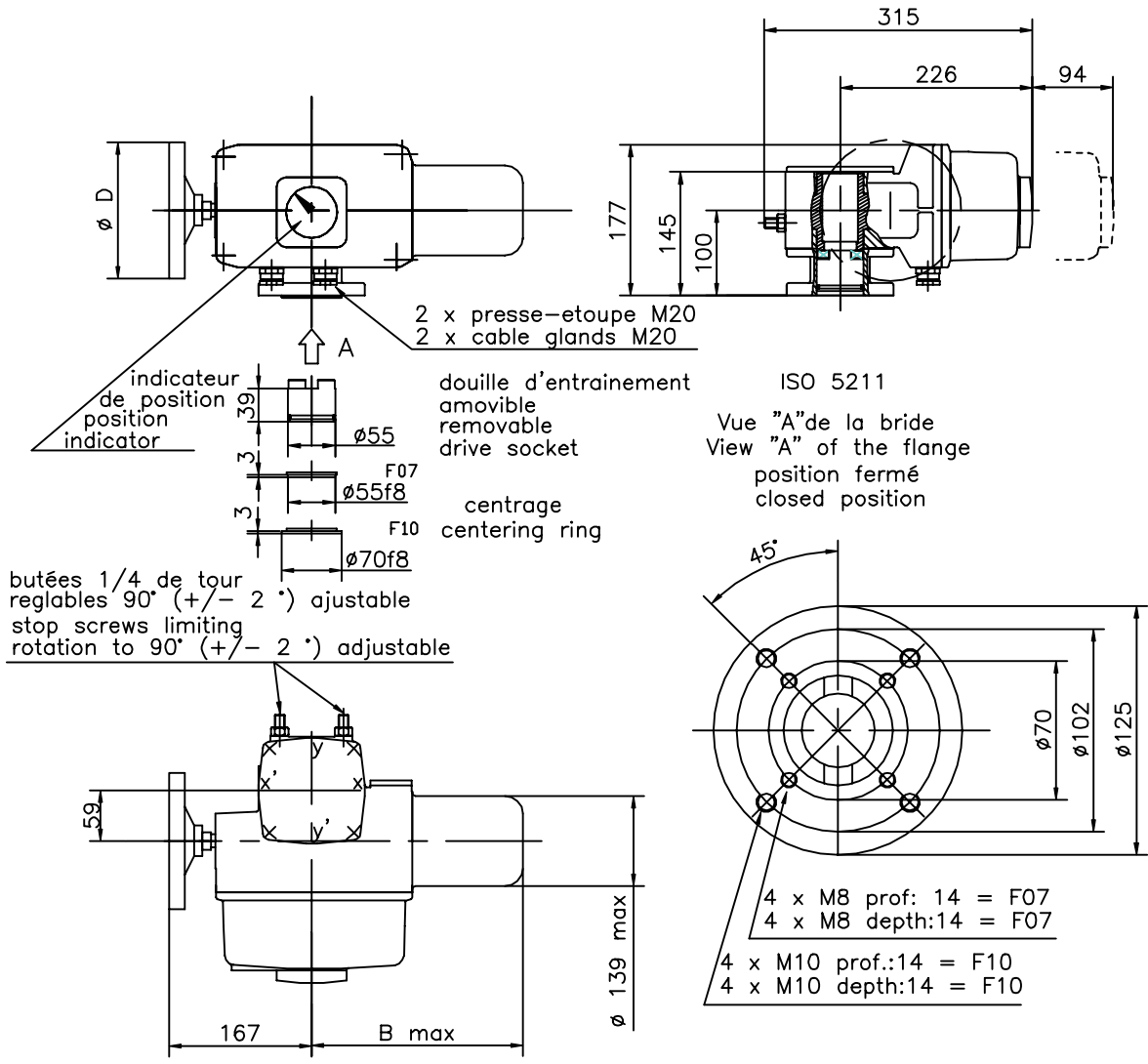
Standard dimensions

Dimensions standard 9 / 11 / 14 / 16 / 17 / 19

14 / 18 / 20 / 22

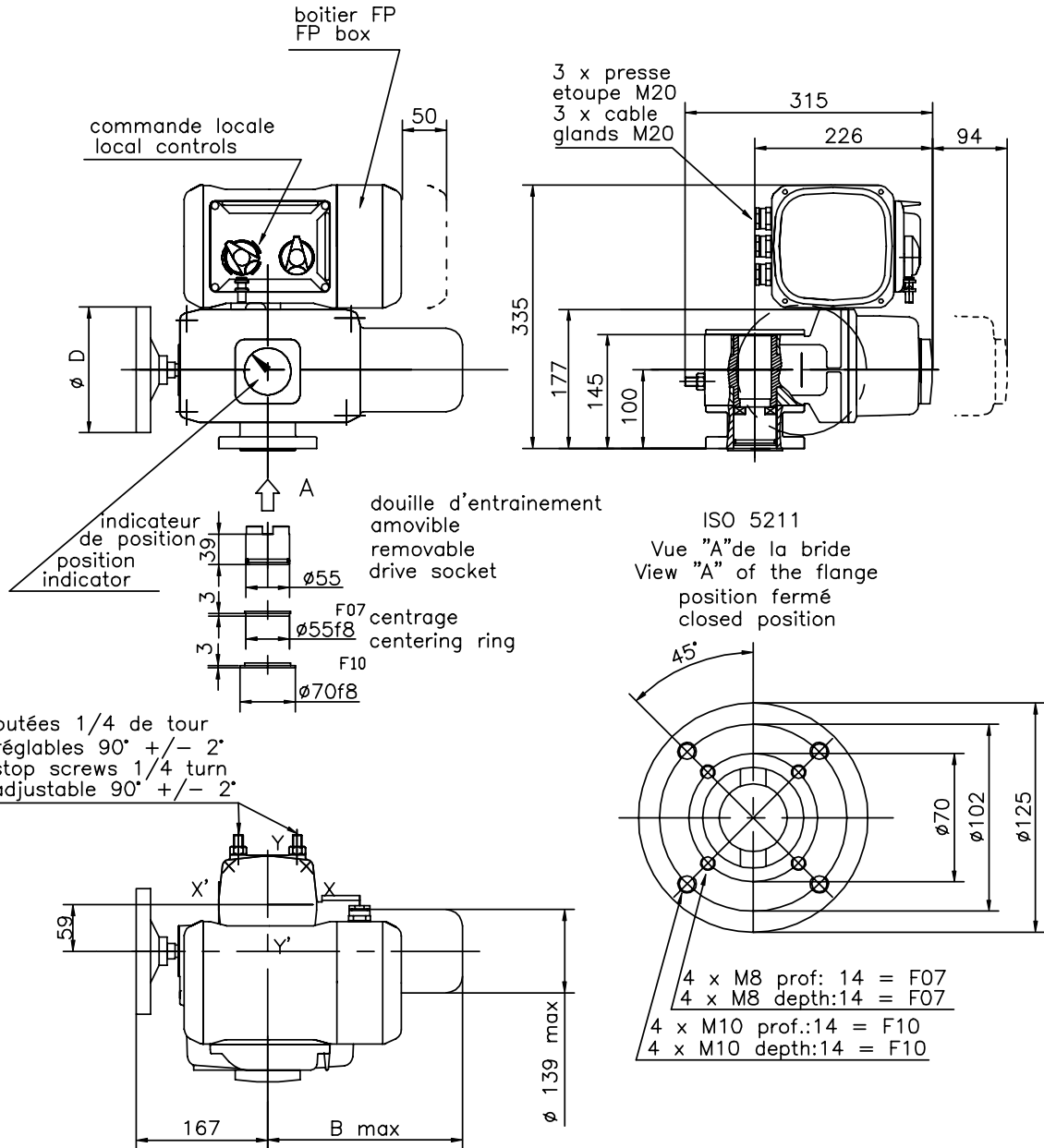
14 / 19

45° machining on request / usinage à 45° sur demande

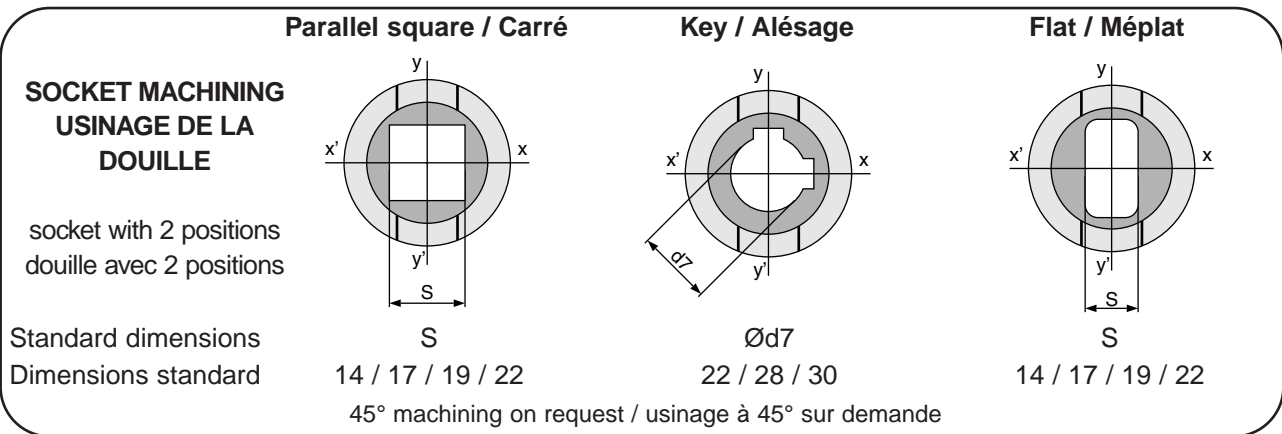


	B	D	kg
AS18	312	100	16
AS25	312	160	18
ASP	340	160	18

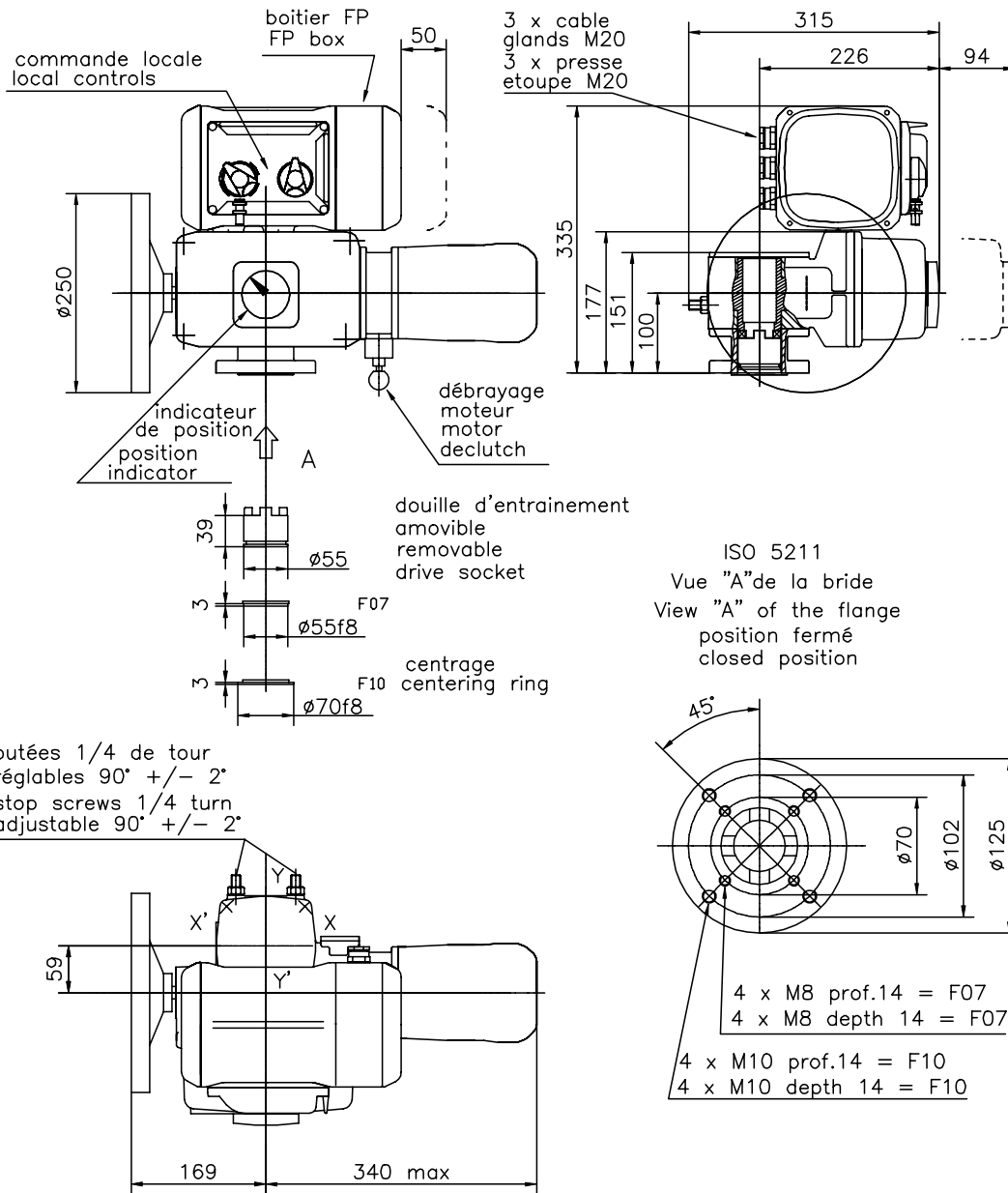
	Parallel square / Carré	Key / Alésage	Flat / Méplat
<b>SOCKET MACHINING USINAGE DE LA DOUILLE</b>			
socket with 2 positions douille avec 2 positions			
Standard dimensions Dimensions standard	S 14 / 17 / 19 / 22	Ød7 22 / 28 / 30	S 14 / 17 / 19 / 22
	45° machining on request / usinage à 45° sur demande		



	B	D	kg
AS18	312	100	20
AS25	312	160	22
ASP	340	160	22







WEIGHT: 21 Kg  
POIDS: 21 Kg

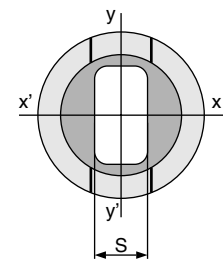
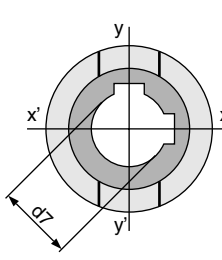
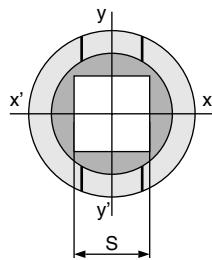
**Parallel square / Carré**

**Key / Alésage**

**Flat / Méplat**

**SOCKET MACHINING  
USINAGE DE LA  
DOUILLE**

socket with 4 positions  
douille avec 4 positions



Standard dimensions

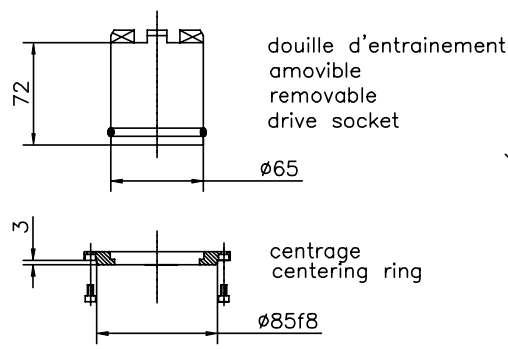
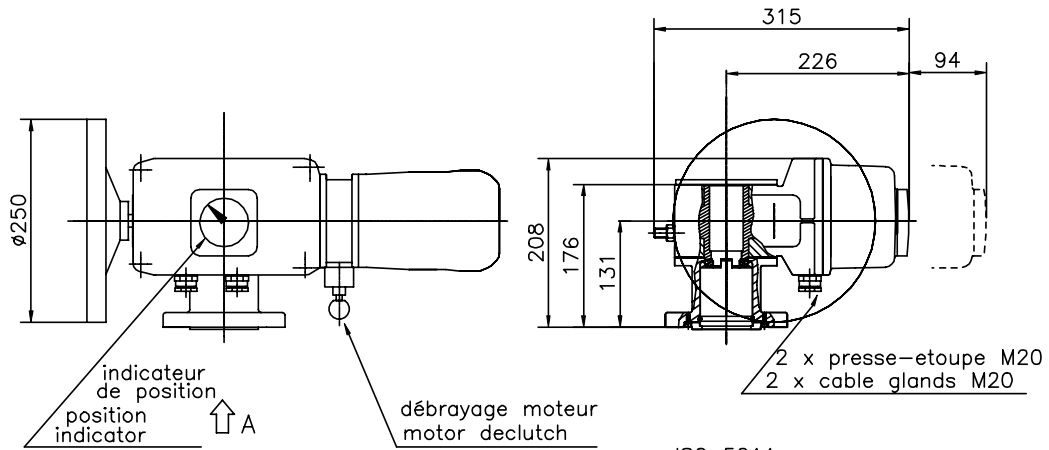
Dimensions standard

S  
14 / 17 / 19 / 22 / 27

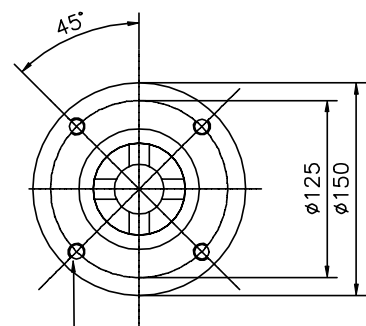
Ød7  
22 / 28 / 30 / 32

S  
14 / 17 / 19 / 22

45° machining on request / usinage à 45° sur demande

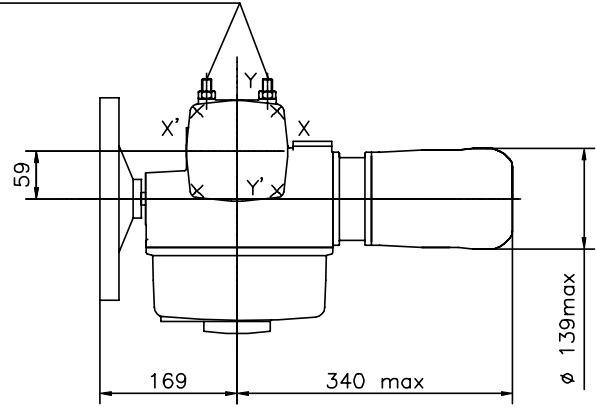


ISO 5211  
 Vue "A" de la bride  
 View "A" of the flange  
 position fermé  
 closed position



4 x M12 prof.:18  
 4 x M12 depth.:18

butées 1/4 de tour  
 réglables 90° +/- 2°  
 stop screws 1/4 turn  
 adjustable 90° +/- 2°



POIDS: 18 Kg  
 WEIGHT: 18 Kg

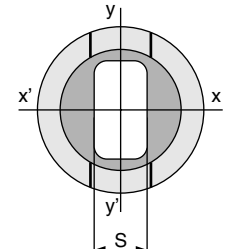
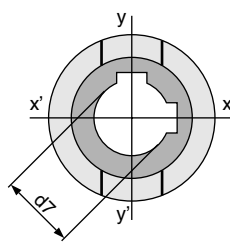
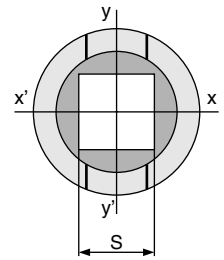
### Parallel square / Carré

### Key / Alésage

### Flat / Méplat

#### SOCKET MACHINING USINAGE DE LA DOUILLE

socket with 4 positions  
 douille avec 4 positions



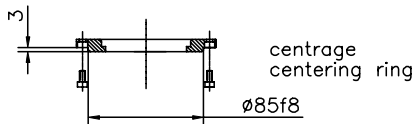
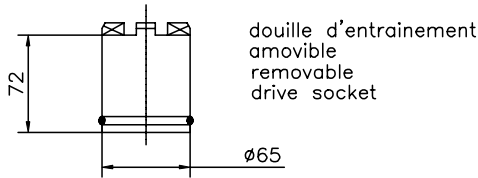
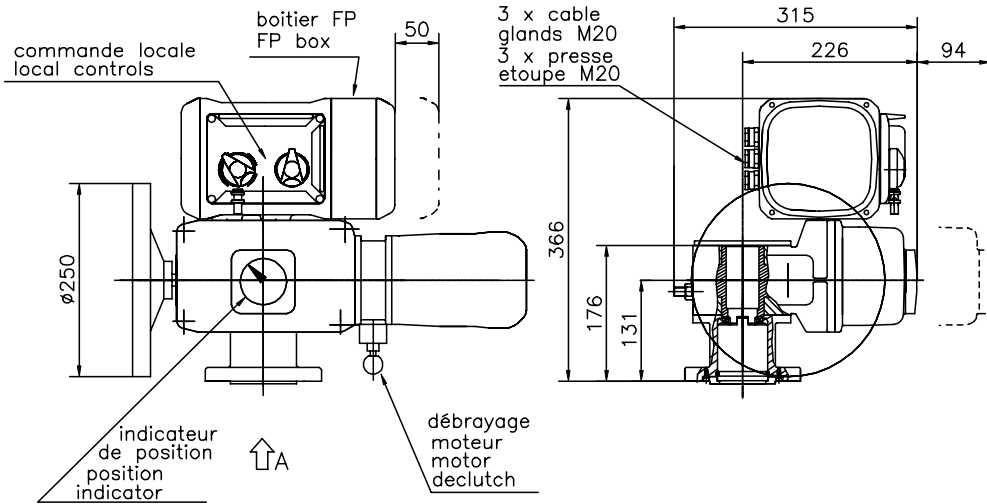
Dimensions standard  
 Dimensions standard

S  
 19 / 22 / 36

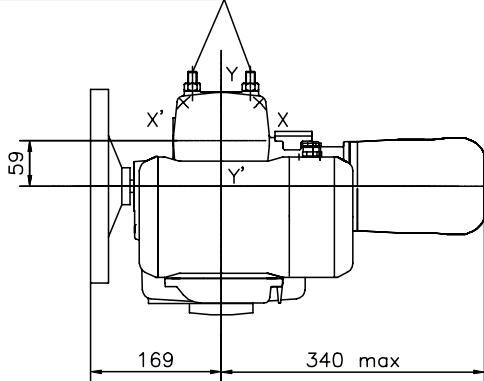
Ød7  
 22 / 28 / 30 / 40

S  
 14 / 17 / 19 / 22

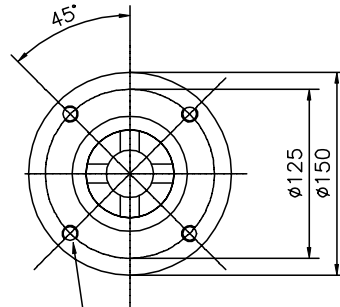
45° machining on request / usinage à 45° sur demande



butées 1/4 de tour réglables 90° +/- 2°  
stop screws 1/4 turn adjustable 90° +/- 2°



ISO 5211  
Vue "A" de la bride  
View "A" of the flange  
position fermé  
closed position



4 x M12 prof.:18  
4 x M12 depth.:18

POIDS: 21 Kg  
WEIGHT: 21 Kg

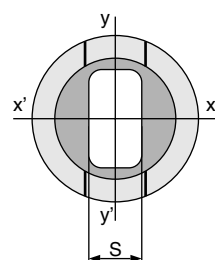
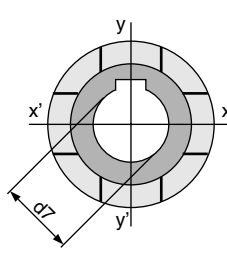
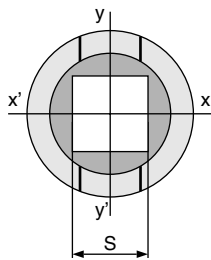
**Parallel square / Carré**

**Key / Alésage**

**Flat / Méplat**

**SOCKET MACHINING  
USINAGE DE LA  
DOUILLE**

socket with 4 positions  
douille avec 4 positions



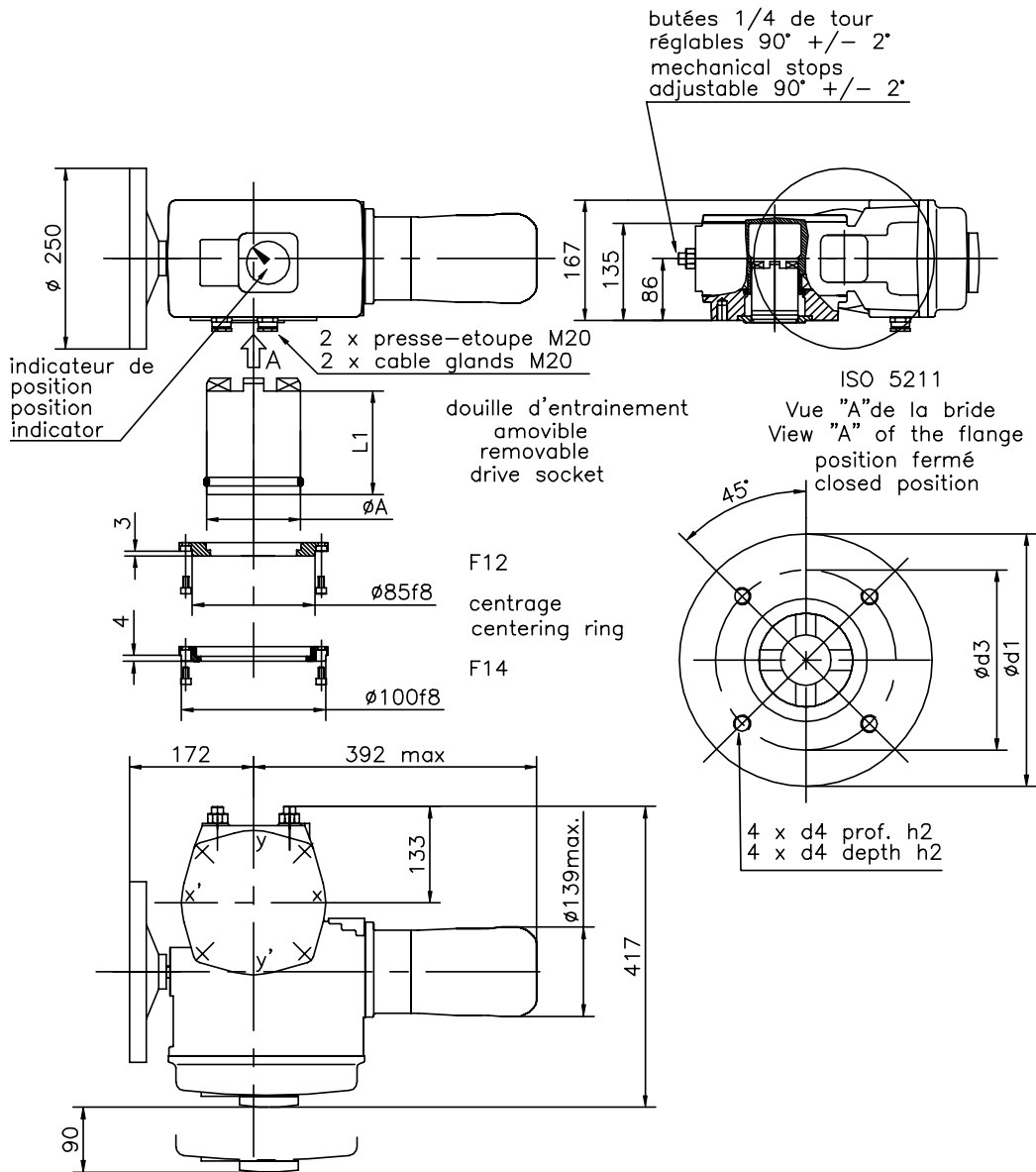
Standard dimensions  
Dimensions standard

S  
19 / 22 / 36

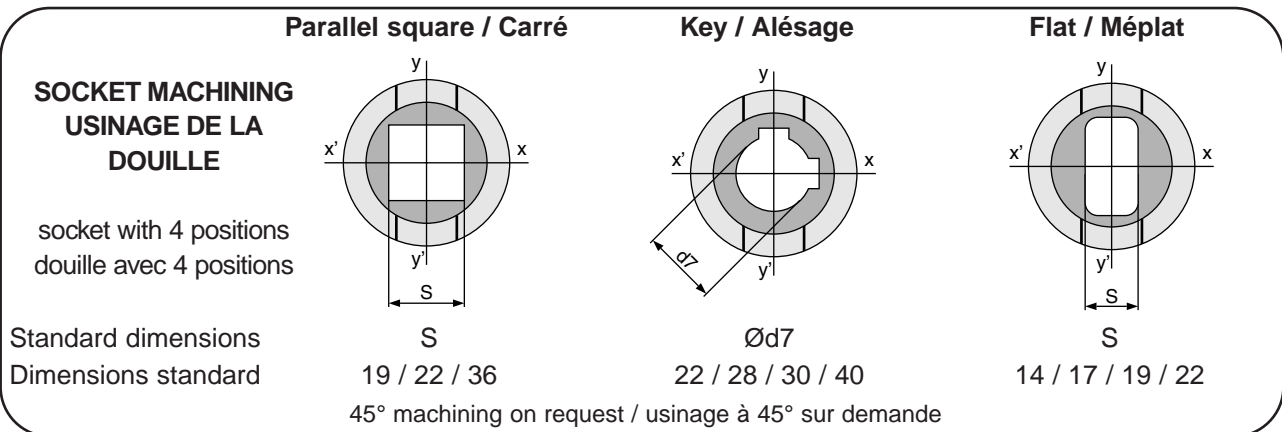
Ød7  
22 / 28 / 30 / 40

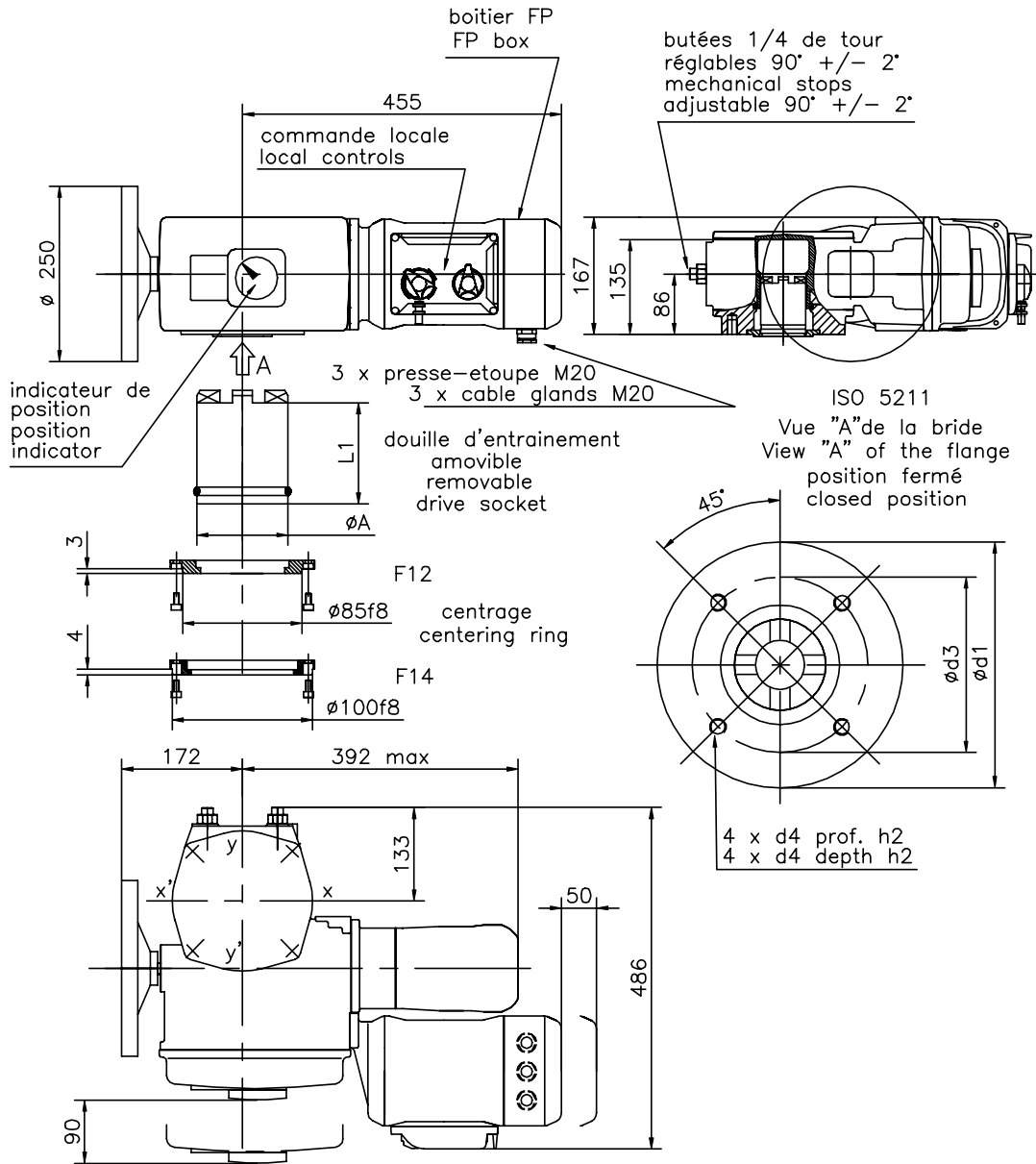
S  
14 / 17 / 19 / 22

45° machining on request / usinage à 45° sur demande

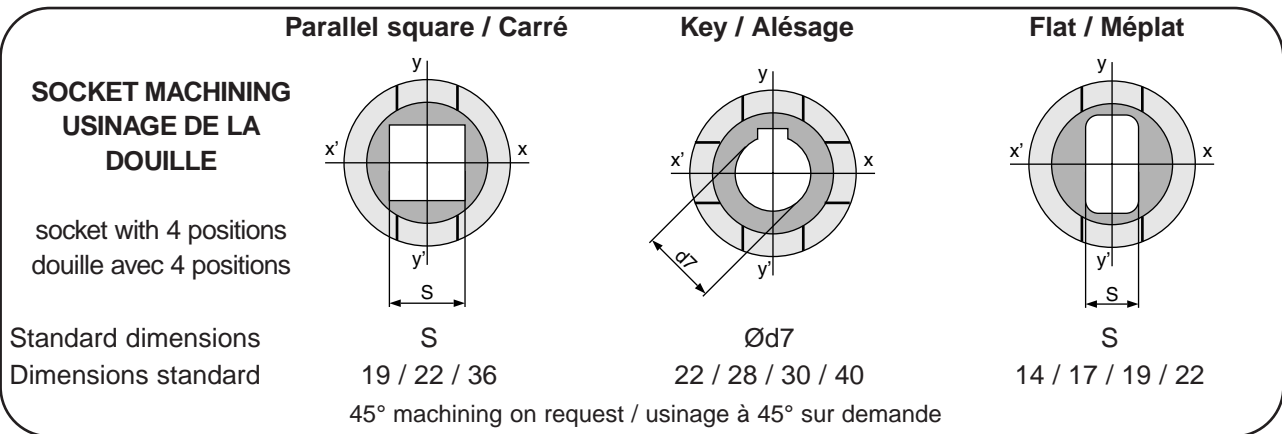


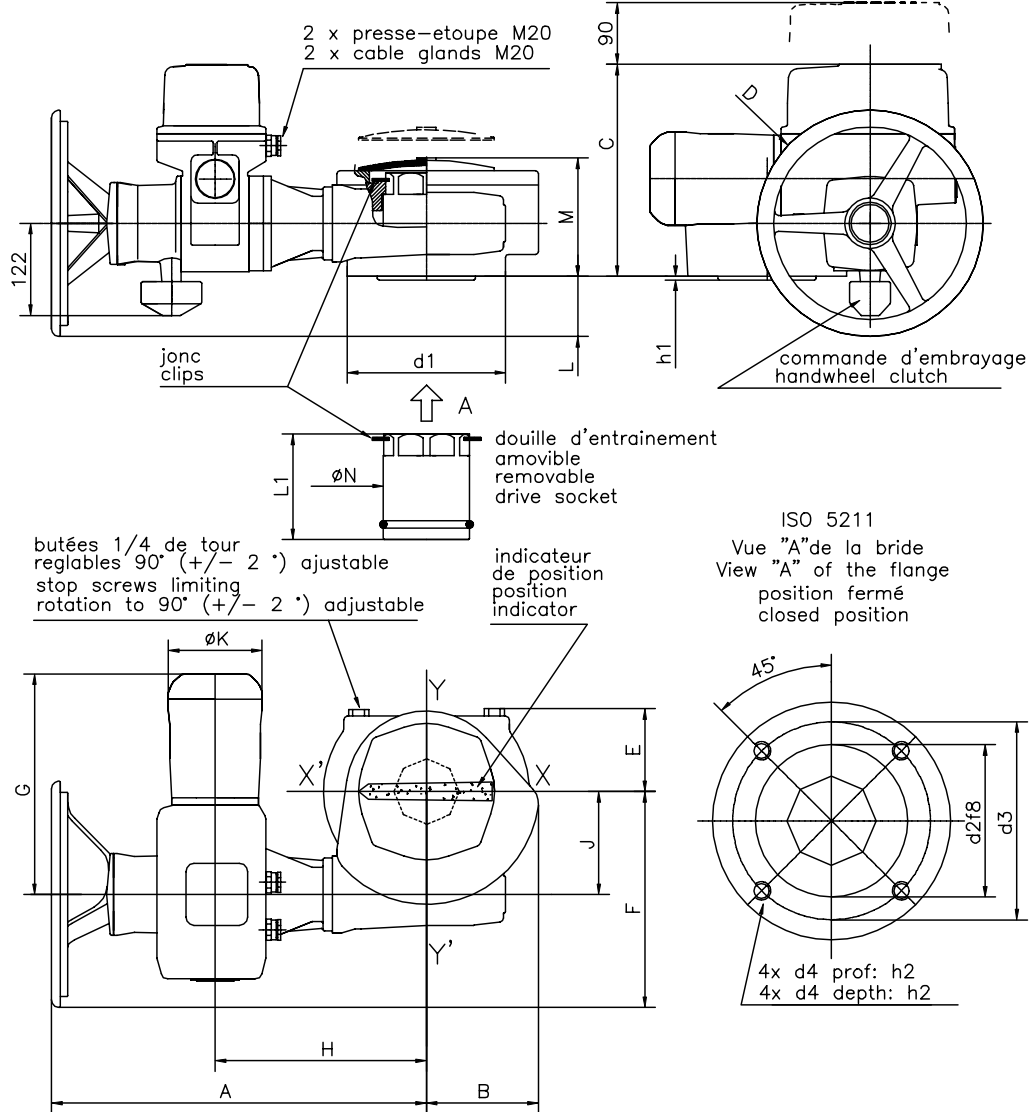
	d1	d2	d3	d4	h1	h2	l3	A	kg
<b>BS50</b>	175	85	125	M12	3	18	73	73	29
<b>BS100</b>	175	85	125	M12	3	18	73	73	30
<b>BS150</b>	175	100	140	M16	4	24	76	172	32





	d1	d2	d3	d4	h1	h2	l3	A	kg
<b>BS50</b>	175	85	125	M12	3	18	73	73	33
<b>BS100</b>	175	85	125	M12	3	18	73	73	34
<b>BS150</b>	175	100	140	M16	4	24	76	172	36





Type	A	B	C	D	E	F	G	H	J	K	L	M	kg	Bride	d1	d2	d3	d4	h1	h2	L1	ØN
AS100	405	114	259	300	110	236	292	188	86	139	102	117	36	F12	150	85	125	M12	3	18	74	75
AS100	405	114	283	300	110	236	292	188	86	139	78	137	36	F14	175	100	140	M16	4	24	95	75
AS200	475	188	281	300	130	333	292	258	183	139	80	149	68	F14	210	..	140	M16	..	24	103	110
AS200	475	188	281	300	130	333	292	258	183	139	80	149	68	F16	210	130	165	M20	5	30	103	110
AS400	497	148	281	300	120	338	292	280	138	139	130	157	70	F16	210	130	165	M20	5	25	103	110

### Parallel square / Carré

### Key / Alésage

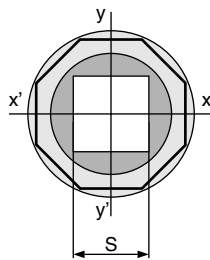
### Flat / Méplat

#### SOCKET MACHINING USINAGE DE LA DOUILLE

socket with 8 positions  
douille avec 8 positions

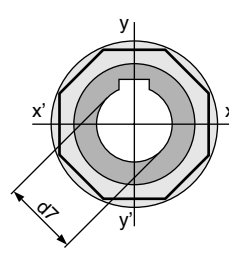
Standard dimensions  
Dimensions standard

AS100  
AS200  
AS400



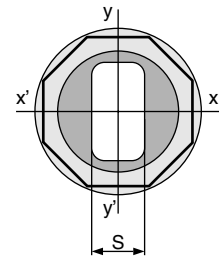
S

22 / 27 / 36  
22 / 27 / 36 / 46  
27 / 36 / 46



Ød7

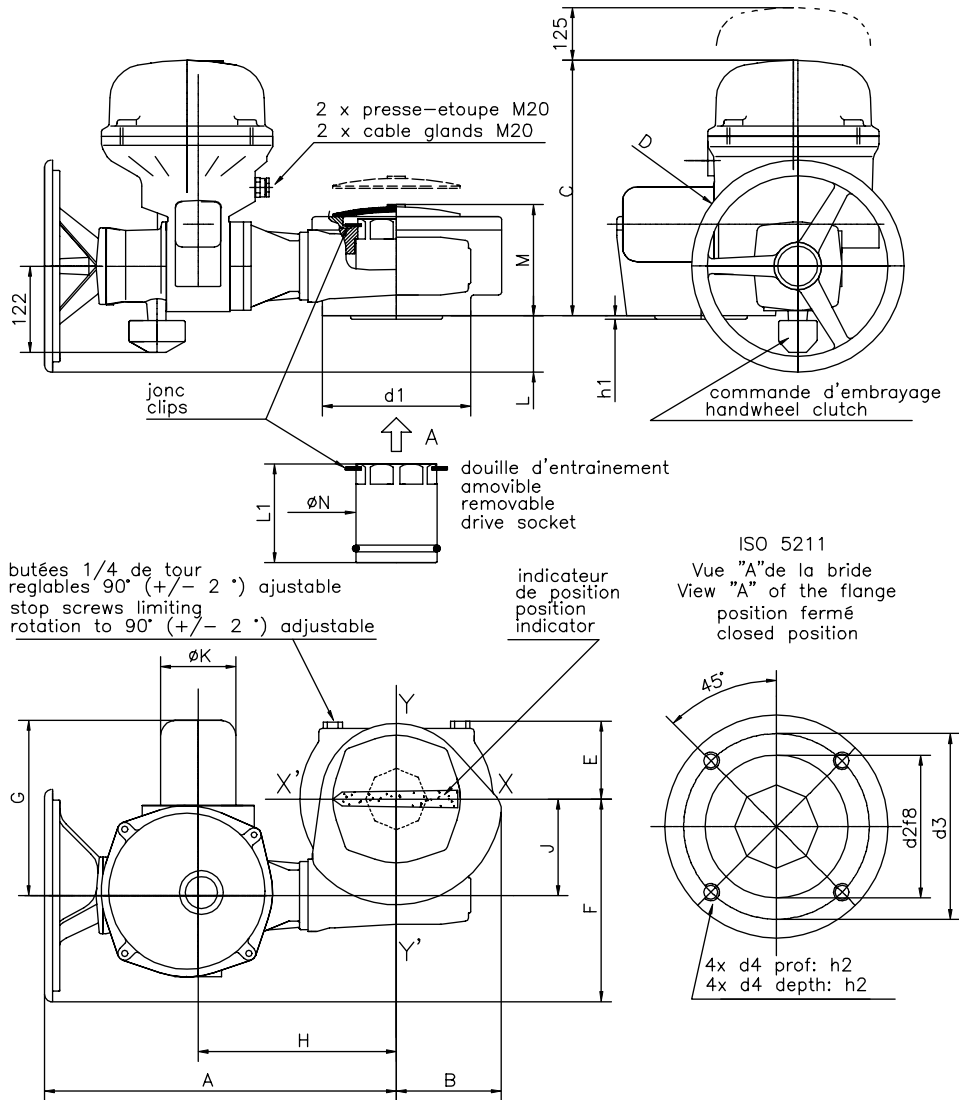
28 / 30 / 36 / 42 / 48 / 50 / 60  
36 / 42 / 48 / 50 / 60 / 72 / 80  
42 / 48 / 50 / 60 / 72 / 80



S

32 / 36  
32 / 36 / 46  
36 / 46

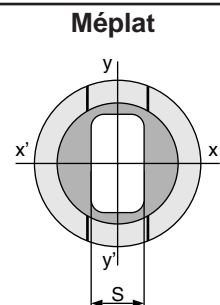
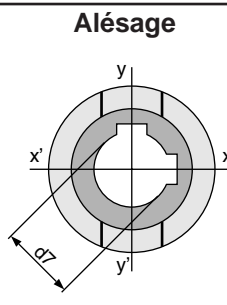
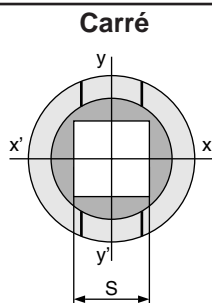




Type	A	B	C	D	E	F	G	H	J	K	L	M	kg	Bride	d1	d2	d3	d4	h1	h2	L1	ØN
AS100	405	114	259	300	110	236	292	188	86	139	102	117	40	F12	150	85	125	M12	3	18	74	75
AS100	405	114	283	300	110	236	292	188	86	139	78	137	40	F14	175	100	140	M16	4	24	95	75
AS200	475	188	281	300	130	333	292	258	183	139	80	149	70	F14	210	..	140	M16	..	24	103	110
AS200	475	188	281	300	130	333	292	258	183	139	80	149	70	F16	210	130	165	M20	5	30	103	110
AS400	497	148	281	300	120	338	292	280	138	139	130	157	72	F16	210	130	165	M20	5	25	103	110

### SOCKET MACHINING USINAGE DE LA DOUILLE

socket with 8 positions  
douille avec 8 positions



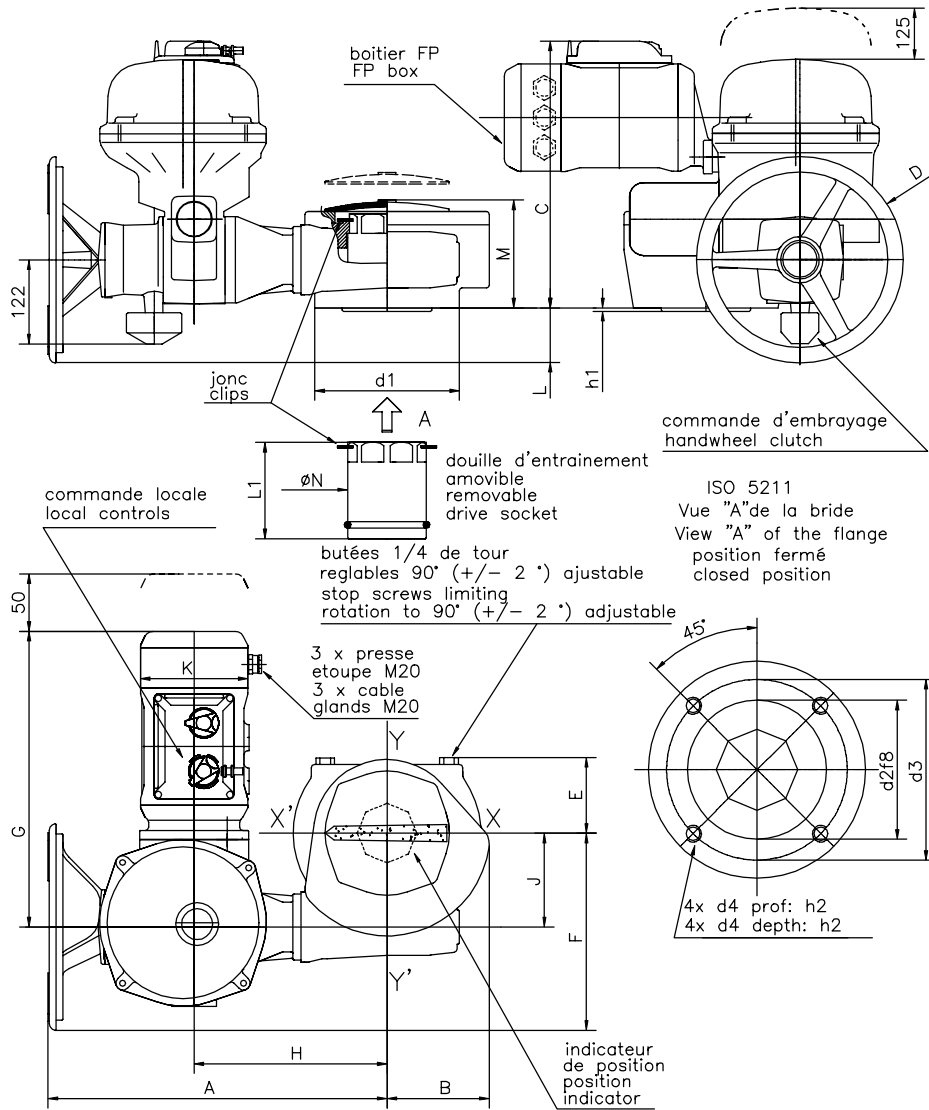
Dimensions standard

AS100  
AS200  
AS400

S  
22 / 27 / 36  
22 / 27 / 36 / 46  
27 / 36 / 46

Ød7  
28 / 30 / 36 / 42 / 48 / 50 / 60  
36 / 42 / 48 / 50 / 60 / 72 / 80  
42 / 48 / 50 / 60 / 72 / 80

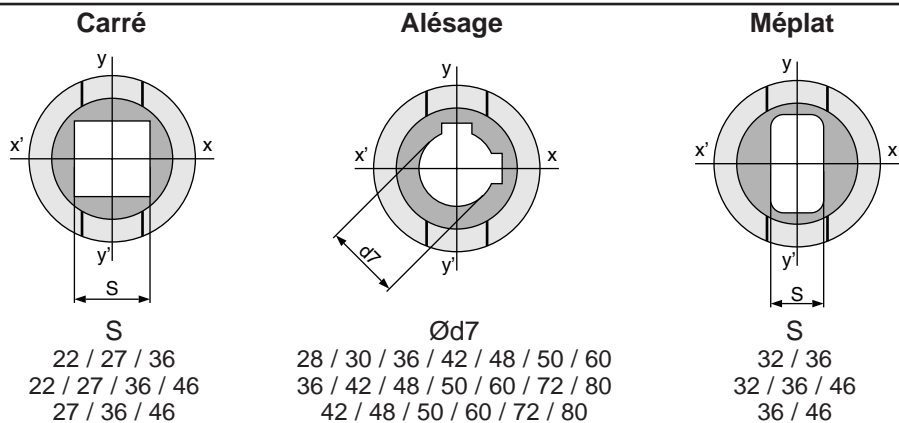
S  
32 / 36  
32 / 36 / 46  
36 / 46



Type	A	B	C	D	E	F	G	H	J	K	L	M	kg	Bride	d1	d2	d3	d4	h1	h2	L1	ØN
AS100	405	114	366	300	102	236	429	280	86	156	76	117	46	F12	150	85	125	M12	3	18	74	75
AS100	405	114	390	300	102	236	429	280	86	156	52	137	46	F14	175	100	140	M16	4	24	95	75
AS200	475	188	387	300	130	333	429	349	183	156	55	149	76	F14	210	..	140	M16	..	24	103	110
AS200	475	188	387	300	130	333	429	349	183	156	55	149	76	F16	210	130	165	M20	5	30	103	110
AS400	497	148	387	300	120	288	429	280	138	156	55	157	78	F16	210	130	165	M20	5	25	103	110

### SOCKET MACHINING USINAGE DE LA DOUILLE

socket with 8 positions  
douille avec 8 positions



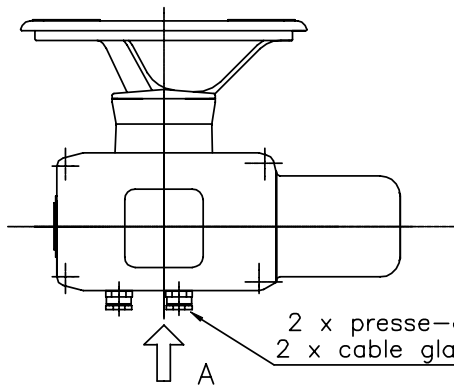
Dimensions standard

AS100  
AS200  
AS400

S  
22 / 27 / 36  
22 / 27 / 36 / 46  
27 / 36 / 46

Ød7  
28 / 30 / 36 / 42 / 48 / 50 / 60  
36 / 42 / 48 / 50 / 60 / 72 / 80  
42 / 48 / 50 / 60 / 72 / 80

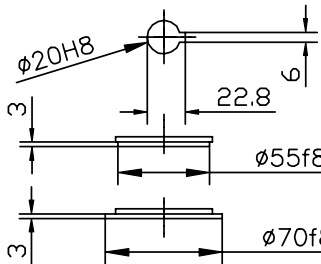
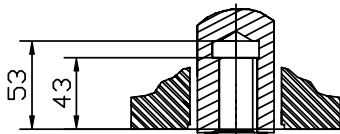
S  
32 / 36  
32 / 36 / 46  
36 / 46



2 x presse-étoupe M20  
2 x cable glands M20

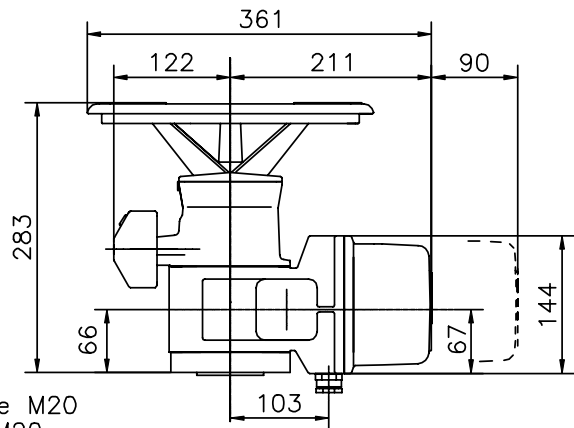
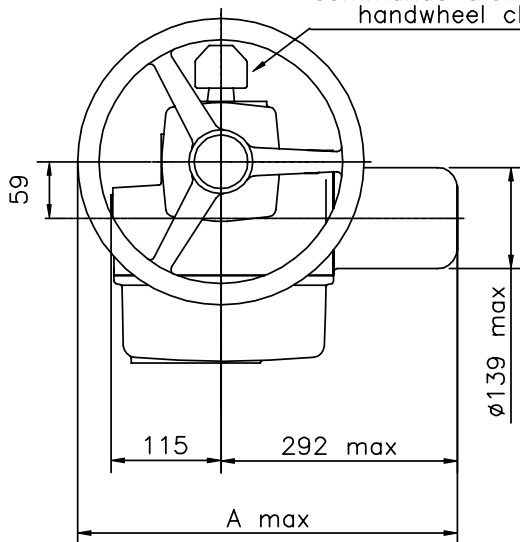
A

ENTRAINEMENT STANDARD  
STANDARD OUTPUT DRIVE



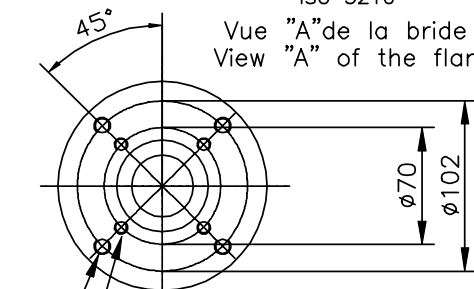
F07  
centrage  
centering ring  
F10

commande d'embrayage  
handwheel clutch



ISO 5210

Vue "A" de la bride  
View "A" of the flange

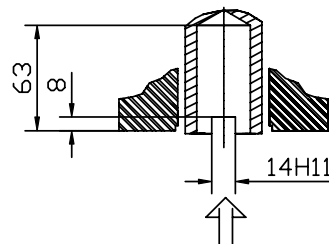


4 x M8 prof: 14 = F07  
4 x M8 depth:14 = F07

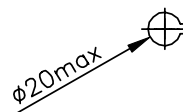
4 x M10 prof.:14 = F10  
4 x M10 depth:14 = F10

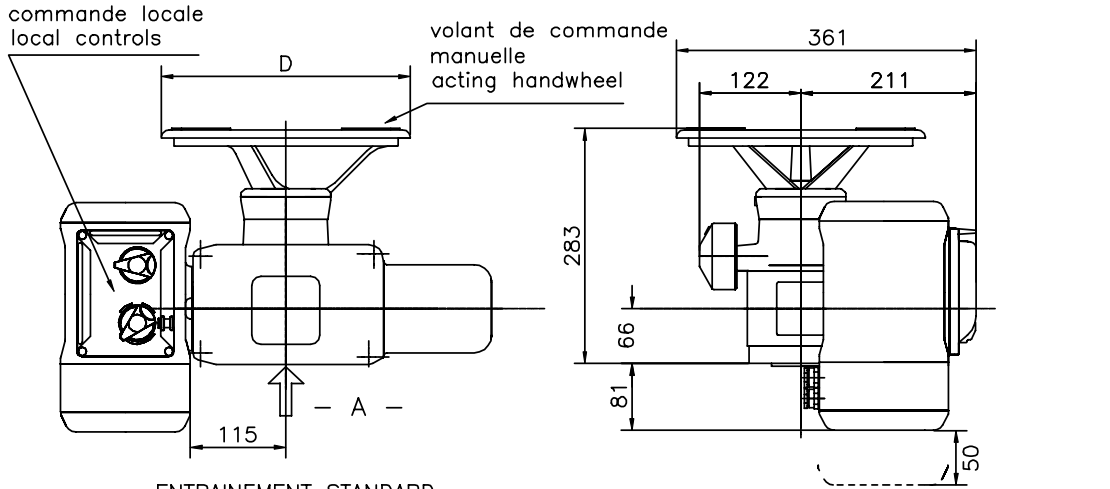
	D	A	Kg
ASM0	300	442	16
ASM1	400	492	18

OPTION DOUILLE D'ENTRAINEMENT AMOVIBLE  
OPTIONAL REMOVABLE DRIVE SOCKET

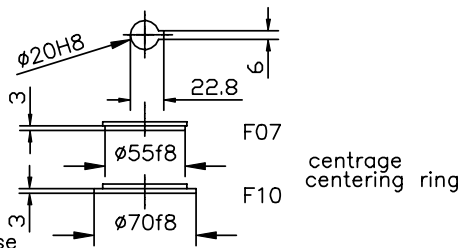
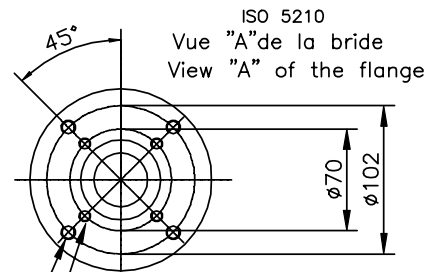
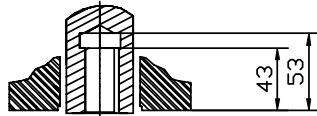


douille d'entrainement  
amovible  
removable  
drive socket  
ø 31.5



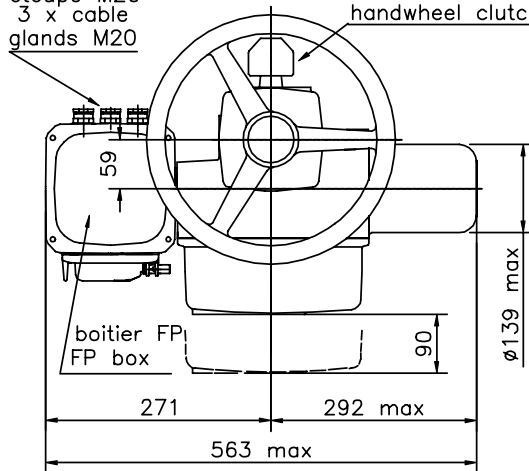


ENTRAINEMENT STANDARD  
STANDARD OUTPUT DRIVE



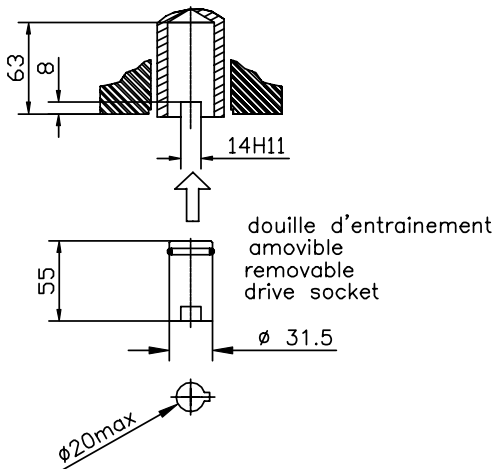
3 x presse  
etoupe M20  
3 x cable  
glands M20

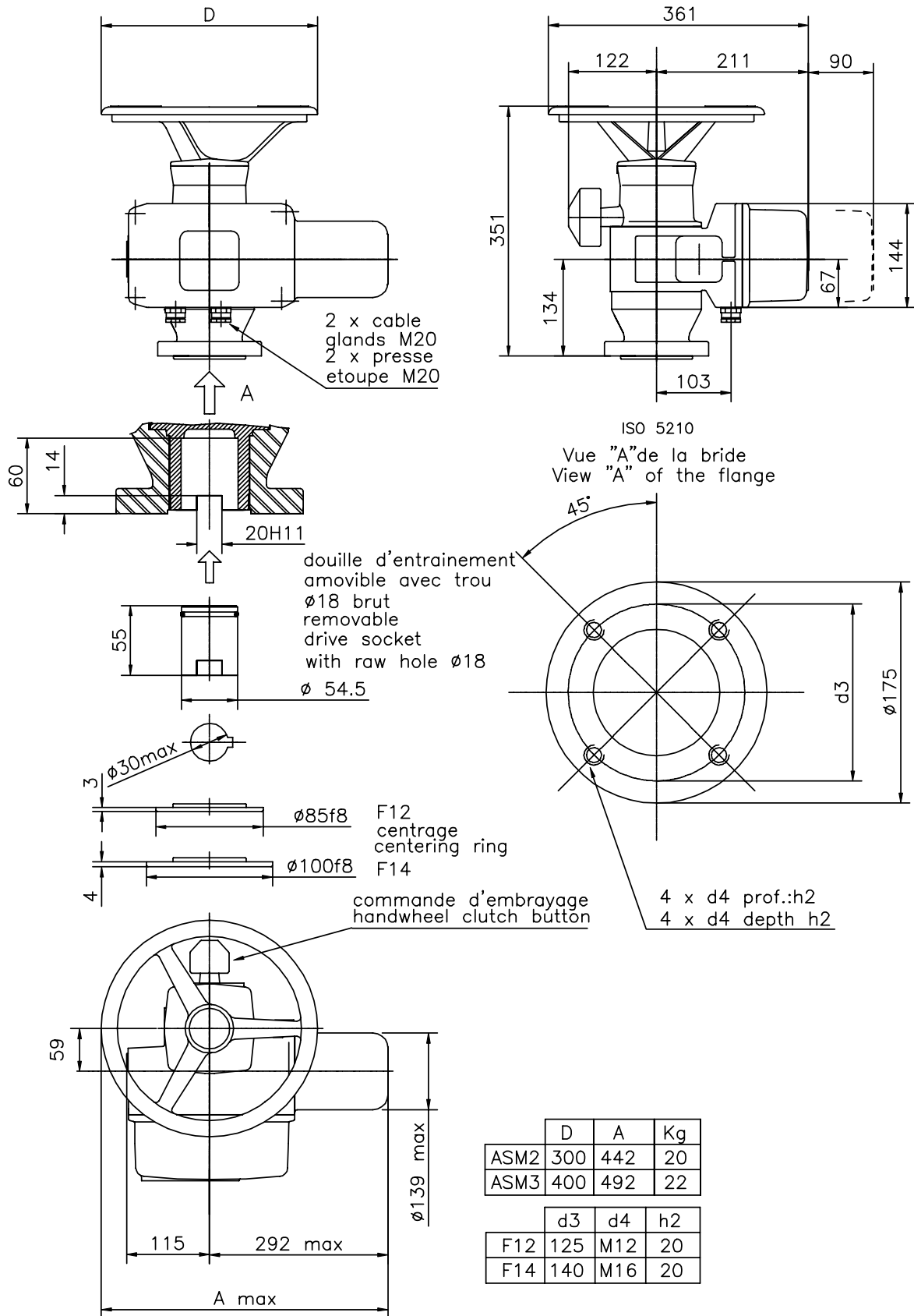
commande d'embrayage  
handwheel clutch



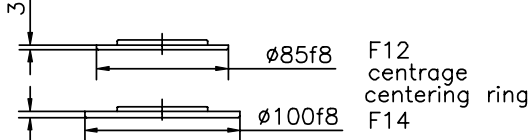
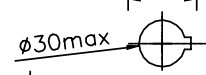
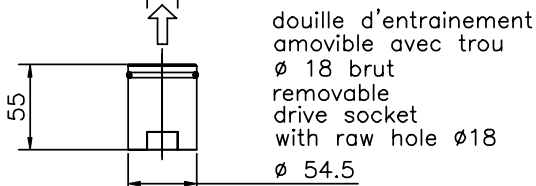
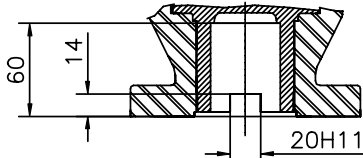
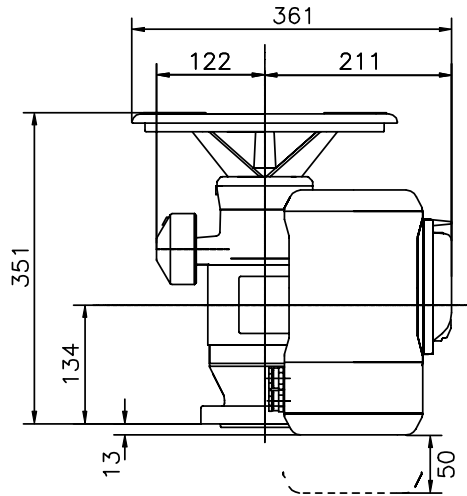
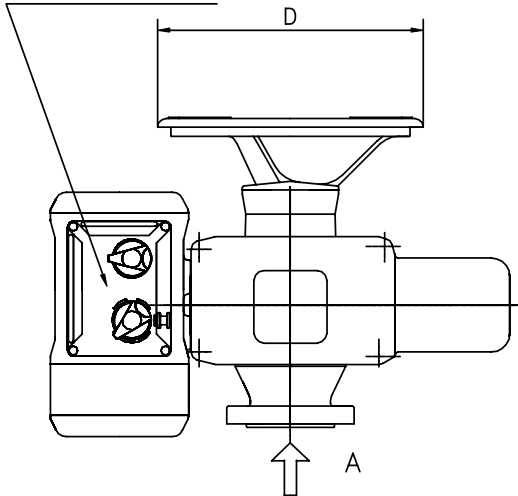
	D	Kg
ASM0 FP	300	20
ASM1 FP	400	24

OPTION DOUILLE D'ENTRAINEMENT AMOVIBLE  
OPTIONAL REMOVABLE DRIVE SOCKET

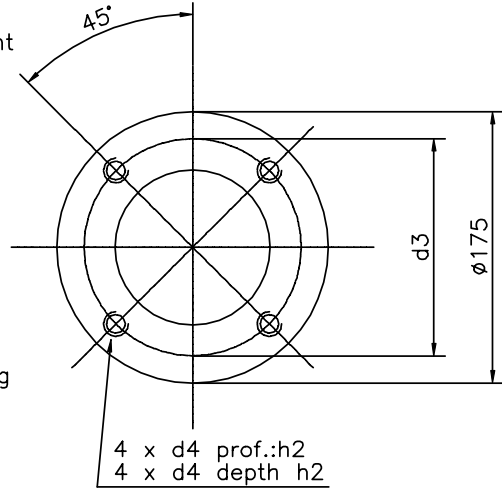




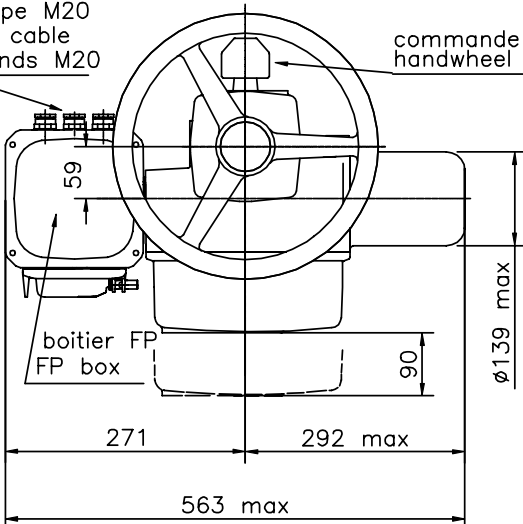
commande locale  
local controls



ISO 5210  
Vue "A" de la bride  
View "A" of the flange



3 x presse  
etoupe M20  
3 x cable  
glands M20

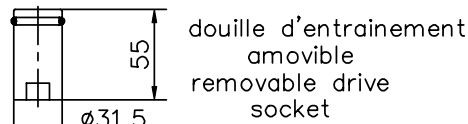
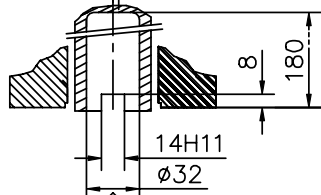
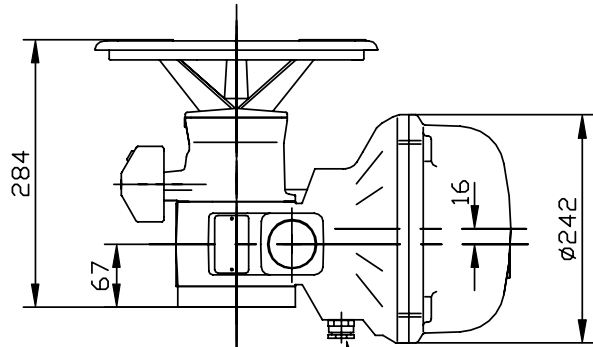
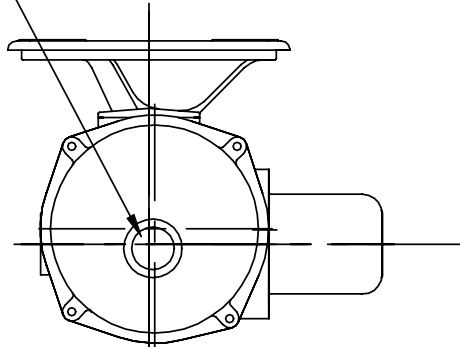


commande d'embrayage  
handwheel clutch button

	D	Kg
ASM2 FP	300	24
ASM3 FP	400	26

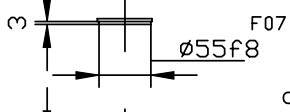
	d3	d4	h2
F12	125	M12	20
F14	140	M16	20

indicateur de position  
position indicator

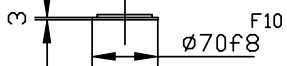


douille d'entraînement  
amovible  
removable drive  
socket

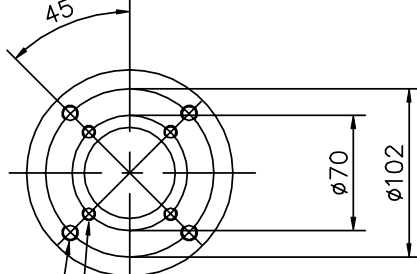
$\varnothing 20_{\text{max}}$



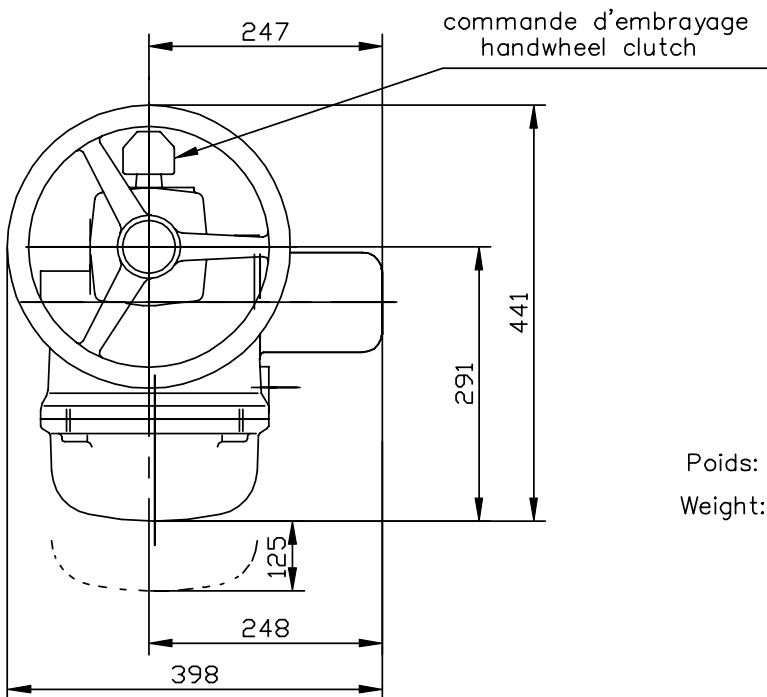
centrage  
centering ring



ISO 5210  
Vue "A" de la bride  
View "A" of flange



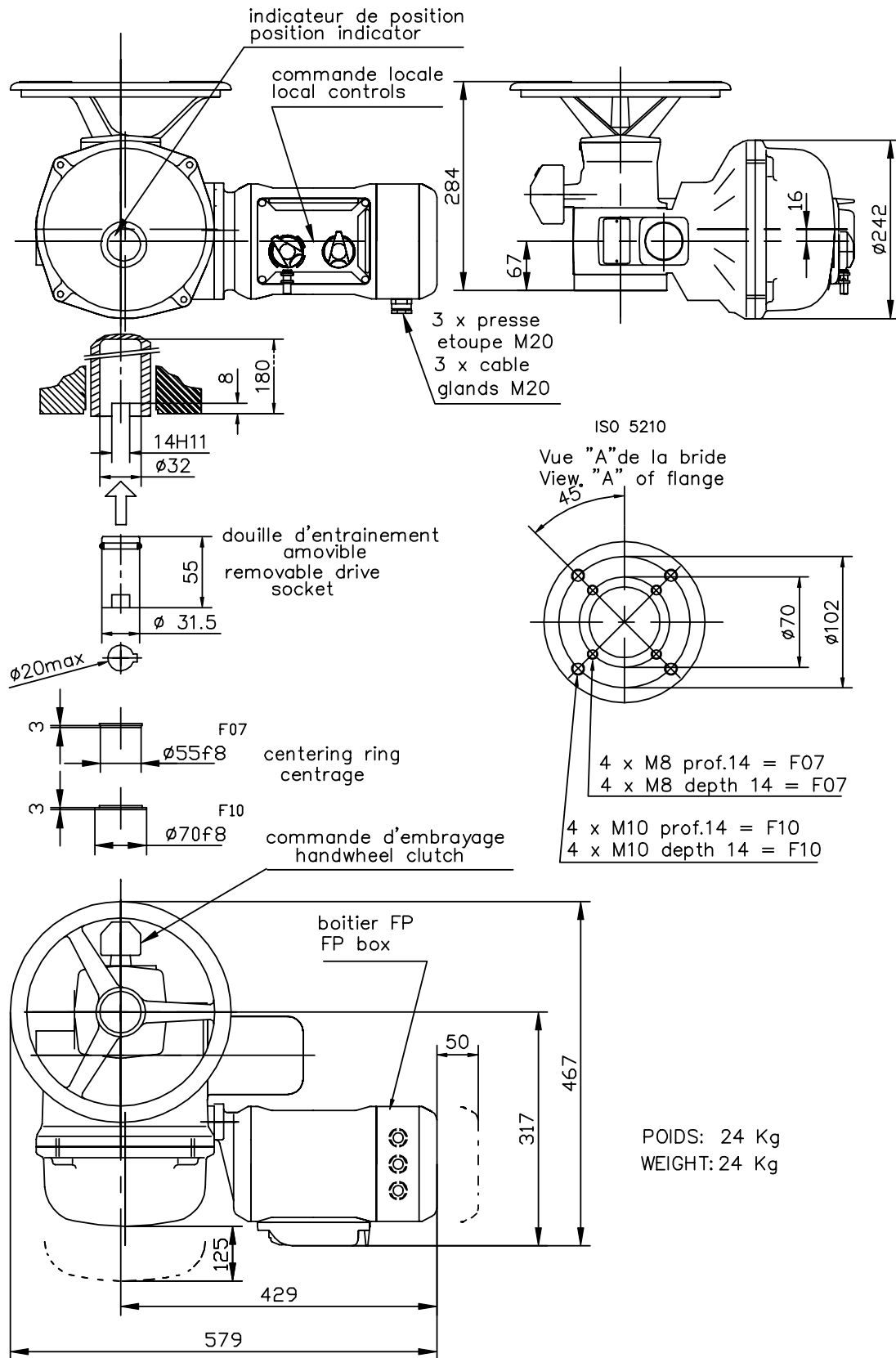
4 x M8 prof.14 = F07  
4 x M8 depth 14 = F07  
4 x M10 prof.14 = F10  
4 x M10 depth 14 = F10

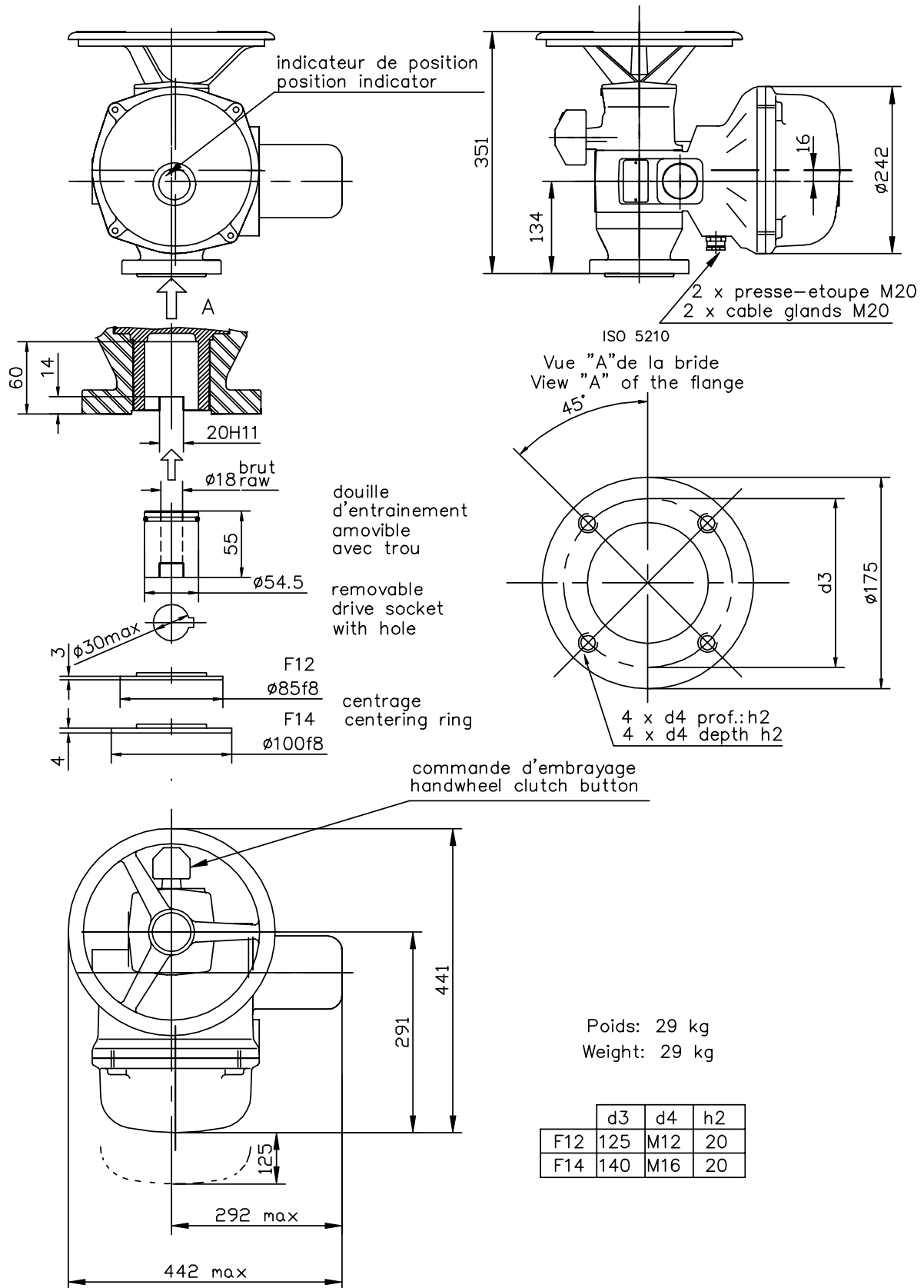


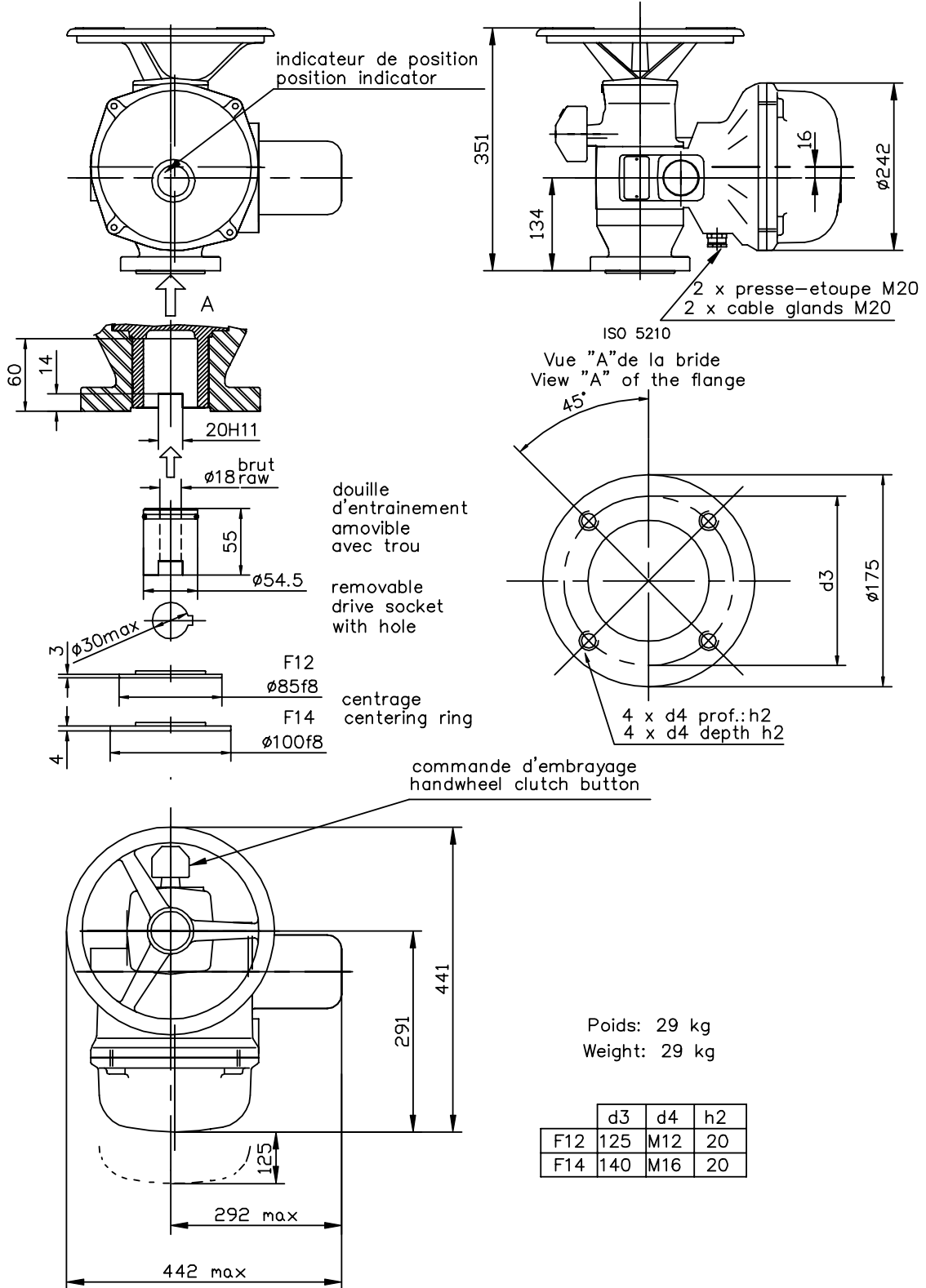
commande d'embrayage  
handwheel clutch

Poids: 20 Kg

Weight: 20 Kg







# At Your Service Over The World

<b>AUSTRALIA</b> <i>fcx@fcxaustralia.com.au</i>	PEGLER BEACON AUSTRALIA Pty Ltd ROWVILLE, VICTORIA Tel : + 61 3 97 65 61 11 Fax : + 61 3 97 65 61 65	<b>MALAYSIA</b> <i>tcmeng@pc.jaring.my</i>	ACTUATION & CONTROLS ENGINEER JOHOR BAHRU Tel : +60 7 23 50 277 / 23 50 281 Fax : +60 7 23 50 280 / 23 50 285
<b>AUSTRIA</b> <i>hammermueller@IPU.co.at</i>	IPU ING PAUL UNGER WIEN Tel : +43 1 602 41 49 Fax : +43 1 603 29 43	<b>MIDDLE-EAST</b> <i>bernact@emirates.net.ae</i>	BERNARD MIDDLE-EAST DUBAI - U.A.E. Tel : +971 4 39 80 726 Fax : +971 4 39 80 726
<b>BELGIUM</b> <i>christian.baert@bernard-benelux.com</i>	BERNARD BENELUX SA BRUXELLES Tel : +32 2 34 34 122 Fax : +32 2 34 72 843	<b>MOROCCO</b> <i>aquatel@wanadoo.net.ma</i>	AQUATEL sarl CASABLANCA Tel : +212 22 66 55 71 Fax : +212 22 66 55 74
<b>BRAZIL</b> <i>jcn@jcn.com.br</i>	JCN SAO PAULO Tel : +55 11 39 02 26 00 Fax : +55 11 39 02 40 18	<b>NETHERLANDS</b> <i>bernard.benelux@12move.nl</i>	BERNARD BENELUX NV AR UTRECHT Tel : +31 30 24 14 700 Fax : +31 30 24 13 949
<b>CHINA</b> <i>office@tadella.com</i> <i>www.tadella.com</i>	BERNARD BEIJING OFFICE BEIJING Tel : +86 10 6517 0601 / 0602 Fax : +86 10 6517 0603	<b>NORWAY</b> <i>jer@fagerberg.no</i> <i>www.fagerberg.no</i>	FAGERBERG NORGE a.s. GRESSVIK Tel : +47 69 35 55 30 Fax : +47 69 35 55 31
<b>CZECH REPUBLIC</b> <i>brno@fluidbohemia.cz</i>	FLUIDTECHNIK BOHEMIA s.r.o. BRNO Tel : +420 548 213 233-5 Fax : +420 548 213 238	<b>POLAND</b> <i>matzanke@pol.pl</i>	MARCO WARSAW Tel : +48 22 864 55 43 Fax : +48 22 864 94 22
<b>DENMARK</b> <i>jh@armatec.dk</i> <i>www.armatec.dk</i>	ARMATEC A/S GLOSTRUP Tel : +45 46 96 00 00 Fax : +45 46 96 00 01	<b>PORTUGAL</b> <i>import.export@pinhol.com.pt</i>	PINHOL, GOMES & GOMES LDA. CAMAXIDE Tél : +351 21 425 68 50 Fax : +351 21 425 68 59
<b>FINLAND</b> <i>info@soffco.fi</i> <i>www.soffco.fi</i>	OY SOFFCO AB ESPOO Tel : +358 9 54 04 620 Fax : +358 9 54 04 6250	<b>RUSSIA</b> <i>aet@ctinet.ru</i>	A.E.T. ST PETERSBURG Tel : +7 812 320 55 97 Fax : +7 812 320 55 97
<b>GERMANY</b> <i>bernard@deufra.de</i> <i>www.deufra.de</i>	DEUFRA GMBH TROI SDORF Tel : +49 22 41 98 340 Fax : +49 22 41 98 34 44	<b>SINGAPORE</b> <i>acesin@singnet.com.sg</i>	ACTUATION & CONTROLS ENG. (ASIA) SINGAPORE Tel : +65 65 654 227 Fax : +65 65 650 224
<b>GREECE</b> <i>yanpap@accpi.gr</i>	PI&MS ATHENS Tel : +30 2 10 66 69 129 Fax : +30 2 10 66 69 130	<b>SPAIN</b> <i>bernardservo@wanadoo.es</i>	BERNARD SERVOMOTORES MADRID Tel : +34 91 30 41 139 Fax : +34 91 32 73 442
<b>HUNGARY</b> <i>bela.apagyai@mail.tvnet.hu</i>	APAGYI TRADEIMPEX KFT BUDAPEST Tel : +36 1 223 1958 Fax : +36 1 273 0680	<b>SWEDEN</b> <i>peter.fredriksson@fagerberg.se</i> <i>www.fagerberg.se</i>	G. FAGERBERG AB GÖTEBORG Tel : +46 31 69 37 00 Fax : +46 31 69 38 00
<b>INDIA</b> <i>mail@ilpgt.com</i>  <i>chemtrolssam@vol.net.in</i> <i>www.chemtrolssamil.com</i>	INSTRUMENTATION LTD PALGAT-KERALA Tel : +91 491 56 61 27 Fax : +91 491 56 61 35	<b>SWITZERLAND</b> <i>matokem@datacomm.ch</i> <i>www.matokem.com</i>	MATOKEM AG ALLSCHWIL Tel : +41 61 483 15 40 Fax : +41 61 483 15 42
<b>ITALY</b> <i>info.servomotori@bernard-italia.com</i>	BERNARD SERVOMOTORI MAZZO DI RHO (MILANO) Tel : +39 02 93 90 60 22 Fax : +39 02 93 90 42 46	<b>THAILAND</b> <i>pinvidic@ksc7.th.com</i>	BERNARD SOUTH-EAST ASIA Liaison office Thailand BANGKOK Tel : +66 1 814 57 30 Fax : +66 2 255 26 38
<b>JAPAN</b> <i>yoshiro.shimizu@pechiney.com</i>	BERNARD JAPAN c/o Pechiney Japan TOKYO Tel : +81 3 33 49 66 39 Fax : +81 3 33 49 67 50	<b>UNITED ARABS EMIRATES</b> <i>emhold@emirates.net.ae</i>	EMIRATES HOLDINGS ABU DHABI Tel : +97 12 644 73 73 Fax : +97 12 644 40 66
<b>KOREA (Rep of)</b> <i>bernard@humanitc.com</i> <i>www.humanitc.com</i>  <i>istechkim@kornet.net</i>	<i>Water &amp; environment :</i> H.I TECH. SEOUL Tel : +82 2 532 2604 Fax : +82 2 3478 7089  <i>Power industry :</i> I.S TECH (energy industry) KYONGGI Tel : +82 31 718 15 08 Fax : +82 31 718 34 08	<b>UNITED-KINGDOM</b> <i>enquiries@zoedale.co.uk</i> <i>www.zoedale.co.uk</i>	ZOEDALE Plc BEDFORD Tel : +44 12 34 83 28 32 Fax : +44 12 34 83 28 00
		<b>USA</b> <i>bernard.sales@bernardcontrols.com</i> <i>www.bernardcontrols.com</i>	BERNARD CONTROLS Inc HOUSTON - TEXAS Tel : +1 281 578 66 66 Fax : +1 281 578 27 97



4 rue d'arsonval - BP 91 - 95505 GONESSE. France  
Tel. +33.1.34.07.71.00 - Fax +33.1.34.07.71.01  
E-mail : mail@bernard-actuators.com  
Internet . http://www.bernard-actuators.com

